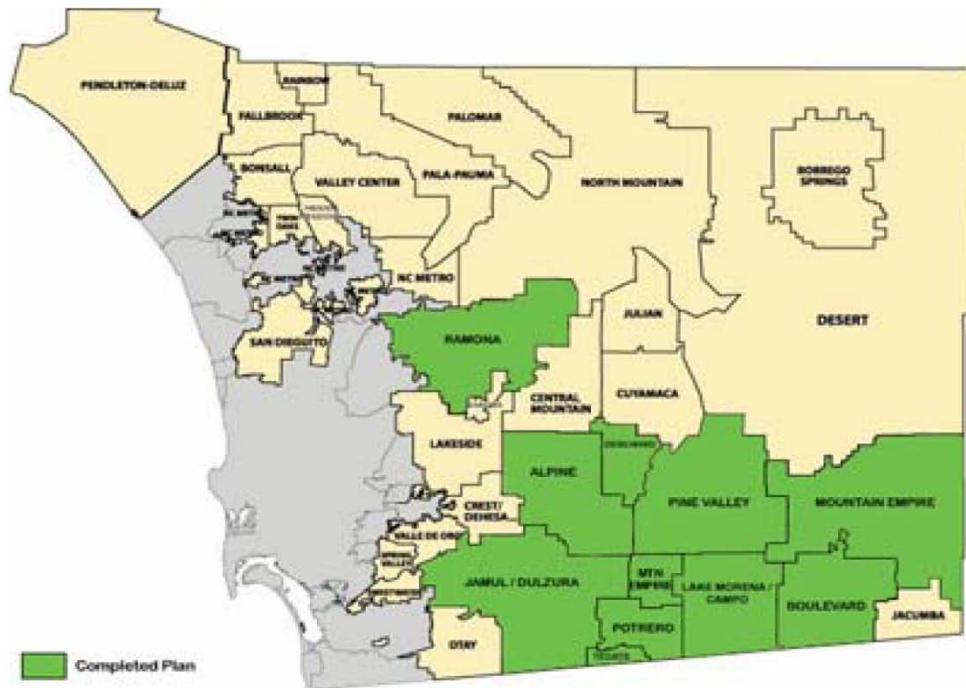


Ramona Community Planning Area

COMMUNITY PROTECTION AND EVACUATION PLAN

San Diego County



American Red Cross
San Diego and Imperial Counties



SAN DIEGO COUNTY

**RAMONA COMMUNITY PROTECTION
& EVACUATION PLAN**

RAMONA COMMUNITY PLANNING AREA

October 2005
Revised May 2014

RAMONA COMMUNITY PROTECTION & EVACUATION PLAN

INTRODUCTION

Introduction

The Ramona Community Protection and Evacuation Plan is a collaboration between the following groups and agencies:

- **Ramona Community Planning Group**
- **Ramona Outback Amateur Radio Service (ROARS)**
- **Ramona Fire Department/CAL FIRE**
- **Ramona CERT**
- **Sheriff's Department**
- **Department of Animal Services**
- **American Red Cross**
- **County Office of Emergency Services.**

It is intended that the Ramona Community Protection and Evacuation Plan will be updated every two years. Questions, comments, and suggestions can be forwarded to Kristi Mansolf of the Ramona Community Planning Group at 15873 Hwy 67, Ramona, California, 92065, or at kmansolf@gmail.com.

RAMONA COMMUNITY PROTECTION & EVACUATION PLAN
TABLE OF CONTENTS

Contents

Section A:	Community Overview & Conditions Ramona Municipal Water and Fire Protection Districts, Community Planning Area Boundary Map Ramona Municipal Water District Boundary Map
Section B:	Community History Fire History Map 1910-2003 Fire History Map 1996-2007
Section C:	Community Stakeholders
Section D:	Mitigation Strategy
Section E:	Community Protection & Evacuation Plan Sheriff's Dept., Ramona Command Evacuation Route Map Sheriff's Dept., Ramona Command Zone Map
Section F:	Fire Agency Response Plans
Section G:	Law Enforcement Response Plans
Section H:	Animal Services
Section I:	Mass Casualty Plan
Section J:	Sheltering
Section K:	Important Phone Numbers & Contact Information
Section K-1:	Radio Communications Ramona Community Emergency Response Team (CERT) & Ramona Outback Amateur Radio Society (ROARS) Ramona Area Communications Plan San Diego County, the Mountain Empire Scanner Frequencies

RAMONA COMMUNITY PROTECTION & EVACUATION PLAN
TABLE OF CONTENTS

**Craig's Citizen Radio and Scanner Page
Emergency Alert System**

Section L: Fire Protection by Geographic Subregion

Section N: Road Access Standards

Section P: Logistics

Section Q: Vegetation Management Websites

RAMONA COMMUNITY PROTECTION & EVACUATION PLAN

SECTION A – OVERVIEW & CONDITIONS

Ramona Overview and Conditions

Ramona is characterized by steep slopes, rocky terrain, rolling topography, deep canyons, high valleys, and expanses of grassland. The native vegetation is highly combustible during the long, seasonal dry periods. Significant fire activity is not uncommon in the heavily vegetated foothills and canyons, with a relatively dry climate and low relative humidity during the late summer and fall periods. Winds commonly occur from the west. Although strong winds from the west and south can be a problem during a fire, the dry, strong north and east winds (Santa Anas) are more problematic.

The most densely populated area of Ramona is the Town Center and vicinity. Development spreads out in concentric circles from the Town Center with large clusters of homes in the Mt. Woodson planned development at the far western side of Ramona; Fernbrook in the Mussey Grade area to the south; the Holly Oaks, San Diego Country Estates and Rancho San Vicente planned developments to the south; and the Oak Tree Ranch modular home park north east of the Town Center. There are many smaller planned developments dispersed throughout the Planning Area. Several of these communities have HOA's or a similar organizational structure in place that enable them to serve as a focal point for their community during a large scale event.

Two new developments, Montecito Ranch (417 homes) and Cumming Ranch (125 homes) were approved in 2011 and 2012. It is anticipated that once they are built, both will have HOA's with leadership that can be turned to by community residents during a large emergency. Additionally, by having an HOA in place, there may be opportunities available to them to create community defense zones around any areas of the projects identified to be vulnerable to wild land fires.

Large areas of open space are often directly adjacent and integrated into developed areas. The Barona Indian Reservation borders Ramona to the south. The Cleveland National Forest borders portions of the north side of Ramona as well as the San Diego Country Estates and vicinity to the east. Ramona has twenty biological Resource Conservation Areas.

The portion of the Ramona Planning Area east of Magnolia is outside of the Ramona Municipal Water District (RMWD) boundaries. Parcels are larger and the land is more rolling. Vegetation is less dense on the east side of Ramona which extends to the Witch Creek area. Agricultural activity, such as grazing, is common throughout the grasslands in the flatter areas. There are avocado groves on the west side of Ramona in the Highland Valley area where an additional water system is available to agricultural growers. In many of the more rural, outlying areas of Ramona, residents are not served by the RMWD and depend on wells. Many wells have gone dry, reducing the availability of water to fight fires.

Ramona is bisected by two State highways, Hwy 67 and Hwy 78. Both have been closed on occasion due to fire and traffic accidents. Traffic congestion during the morning and evening commute can hamper the passage of emergency vehicles. Ramona has two

RAMONA COMMUNITY PROTECTION & EVACUATION PLAN

SECTION A – OVERVIEW & CONDITIONS

alternate routes: Highland Valley Rd. is an alternate route to Escondido and Poway, and Wildcat Canyon Rd. through the Barona Indian Reservation is an alternate route to Lakeside. Extended portions of both Highland Valley Rd. and Wildcat Canyon Rd. are steep, narrow and winding. Wildcat Canyon Rd. passes through long, steep narrow canyons. Vista Ramona Rd. connects to the Old Julian Hwy and then to 3rd St., offering an alternate route from the San Diego Country Estates to Ramona, other than San Vicente Rd. All routes traverse mountainous terrain with native vegetation and would be dangerous to travel if a fire were burning in the area. Cars traveling on the roads have been a source of fire in the past.

The entire area of Ramona outside of the Town Center is vulnerable to fire. As Ramona borders undeveloped portions of other communities and the Cleveland National Forest, all of the areas bordering Ramona are also vulnerable to fire.

Besides the water storage areas of Lake Ramona, Lake Sutherland, and the San Vicente Reservoir, Ramona has many ponds that can be used for water drops during a fire. Elliot Pond in the Town Center, the ponds at Mt. Woodson and the Dos Picos Park Pond are just a few of the ponds in Ramona that generally have water in them all year. There are also many seasonal ponds throughout Ramona.

Ramona has a general aviation airport, located north of the Town Center, that is part of the County regional air transportation network. The United States Forest Service (USFS) and CAL FIRE operate an air attack base at the site which is used to fight fires throughout the region.

There is the new danger posed by possible terrorist events in San Diego. A significant event could cause power outage, disease and a mass influx of people to this area in need of shelter and support.

Seismic Conditions

Local

Locally, the Ramona Community Planning Area contains several faults that are classified as inferred faults. A series of parallel northwest trending faults are located in the northwest end of the Santa Maria Valley. A series of east-west trending faults are found in the San Vicente Valley and vicinity. The south side of Mt. Woodson is bordered by the Warren Canyon fault, which continues eastward along the south side of the Santa Maria Valley, located southwest of the Ramona Town Center.

Regional

On a regional scale, the Ramona Community Planning Area lies within a zone of high earthquake activity. The Elsinore fault, located approximately 14 miles to the northeast of the Town Center, and the San Jacinto fault, located 40 miles to the northeast, are San

RAMONA COMMUNITY PROTECTION & EVACUATION PLAN

SECTION A – OVERVIEW & CONDITIONS

Diego County's largest known active faults and are estimated to have maximum credible earthquakes on the magnitude of 7.6, and 7.5 to 7.8 respectively, to occur every one hundred years. Because of the fairly close proximity of these faults, considerable seismic damage could occur in the area in the way of ground shaking, structural damage, and possible loss of life.

Maps

The map on the following page, RMWD and Fire Protection Districts, shows the relationship between the Ramona Community Planning Area and the RMWD boundaries. Fire Protection Districts in neighboring communities are also shown (RMWD and Fire Protection District Map). For information on fire resources serving the Ramona area, please see *Section L, Fire Protection by Geographic Subregion*.

The second map shows the RMWD boundaries (RMWD Map).

Ramona Municipal Water District

Legend

elev

Value

High: 6514

Low: -8

Major Roads

Freeways

Municipal Water Districts



0 0.5 1 2 Miles

RINCON DEL DIABLO MUNI WID. E (FORMERLY F&G)

San Pasqual

BANDY CANYON

MONTE Ramona

RAMONA MUNICIPAL WATER DISTRICT

Fernbrook

ESPOLA

TWIN PEAKS

POWAY

SCRIPPS POWAY

SR-52

DYE

MAIN

HANSON

PERD

MAGNOLIA

SR-78

PINE

OLD JULIAN

SAN VICENTE

WINDY CANYON

THIS MAP IS PROVIDED WITHOUT WARRANTY OF ANY KIND, EITHER EXPRESSED OR IMPLIED, INCLUDING BUT NOT LIMITED TO, THE IMPLIED WARRANTIES OF MERCHANTABILITY AND FITNESS FOR A PARTICULAR PURPOSE.
Copyright SanGIS. All Rights Reserved.
This product may contain information from SANDAG Regional Information System which cannot be reproduced without the written permission of SANDAG. This product may contain information which has been reproduced with permission granted by Thomas Brothers Maps.
The State of California and the Department of Forestry and Fire Protection make no representations or warranties regarding the accuracy of data or maps. The user will not seek to hold the State or the Department liable under any circumstances for any damages with respect to any claim by the user or any third party on account of or arising from the use of data or maps.
Date: 12/22/2005



RAMONA COMMUNITY PROTECTION & EVACUATION PLAN
SECTION B – COMMUNITY HISTORY

History of the Ramona Region

Ramona is located in the Santa Maria Valley approximately 35 miles northeast of San Diego, and about 25 miles east of the coast. It is bordered by the City of Poway to the west, Lakeside and the Barona Indian Reservation to the south, Santa Ysabel to the east, and Escondido and the North Mountain Subregion to the north. The Santa Maria Valley is at approximately 1,400 feet elevation. Mountains at the Ramona/Poway border reach elevations of about 2,800 feet. Ramona covers approximately 130 square miles. The RMWD covers 75 square miles within this area. Ramona is in the unincorporated portion of San Diego County and conforms to the Ramona Community Planning Area.

Ramona has a long history of nature-related emergencies. Fire is the most common problem with a long history of small and large brush fires. Size and extent of the fires is related to wind conditions, humidity, fuel load, and resources available.

Rainfall typically doesn't fall during the summer months, and it often stays dry until well into the fall or winter seasons, with extreme fire conditions being common. The Inaja fire burned into the south side of Ramona in November of 1956. Approximately 45,000 acres burned. In October of 1967, fires driven by Santa Ana winds burned the north side of Ramona from Montecito Rd., topping Mt. Woodson before burning through Poway to State Route 395. Over 56,000 acres burned. In October of 2003 the Cedar fire burned through Ramona south of Hwy 67 from the Cleveland National Forest near the San Diego Country Estates to the City of San Diego, then turned when the winds changed. Over 270,000 acres burned. In October of 2007 the Witch Creek fire burned through the east and north portions of Ramona, burning 198,000 acres. The extent of dirt roads, often narrow and twisting with residences not clearly marked, makes evacuation and assistance difficult.

Ramona has been through two major fires in four years. The 2003 and 2007 fires made a huge impact on the community. In 2007, 501 homes were lost. The entire community was given evacuation orders. No emergency shelter was officially designated. The ways out of town were limited by fire activity, and Hwy 67 was congested for over six hours. The RMWD water system sustained damage which led to a delay for people getting back into Ramona. After both fires meetings were held to identify problem areas and consider solutions for the future.

Rainfall is erratic. One year of flooding may be followed by several years of drought. Major flooding occurred in Ramona during the rainstorms in 1916 and again when earthen dams broke in 1980 following a prolonged period of rain. Hatfield Creek, Etcheverry Creek and the Santa Maria Creek all overflowed. Some of the areas where flooding occurred include the Highland Valley area of the valley, in the Town Center

RAMONA COMMUNITY PROTECTION & EVACUATION PLAN
SECTION B – COMMUNITY HISTORY

along “D” St., and along Magnolia St. and Pamo Rd. Floods of approximately 50-year to 100-year frequency have been estimated in the Santa Maria Creek, which flows through Ramona. In January of 2005, water covered Rangeland Rd. and Highland Valley Rd. following an extended period of rain.

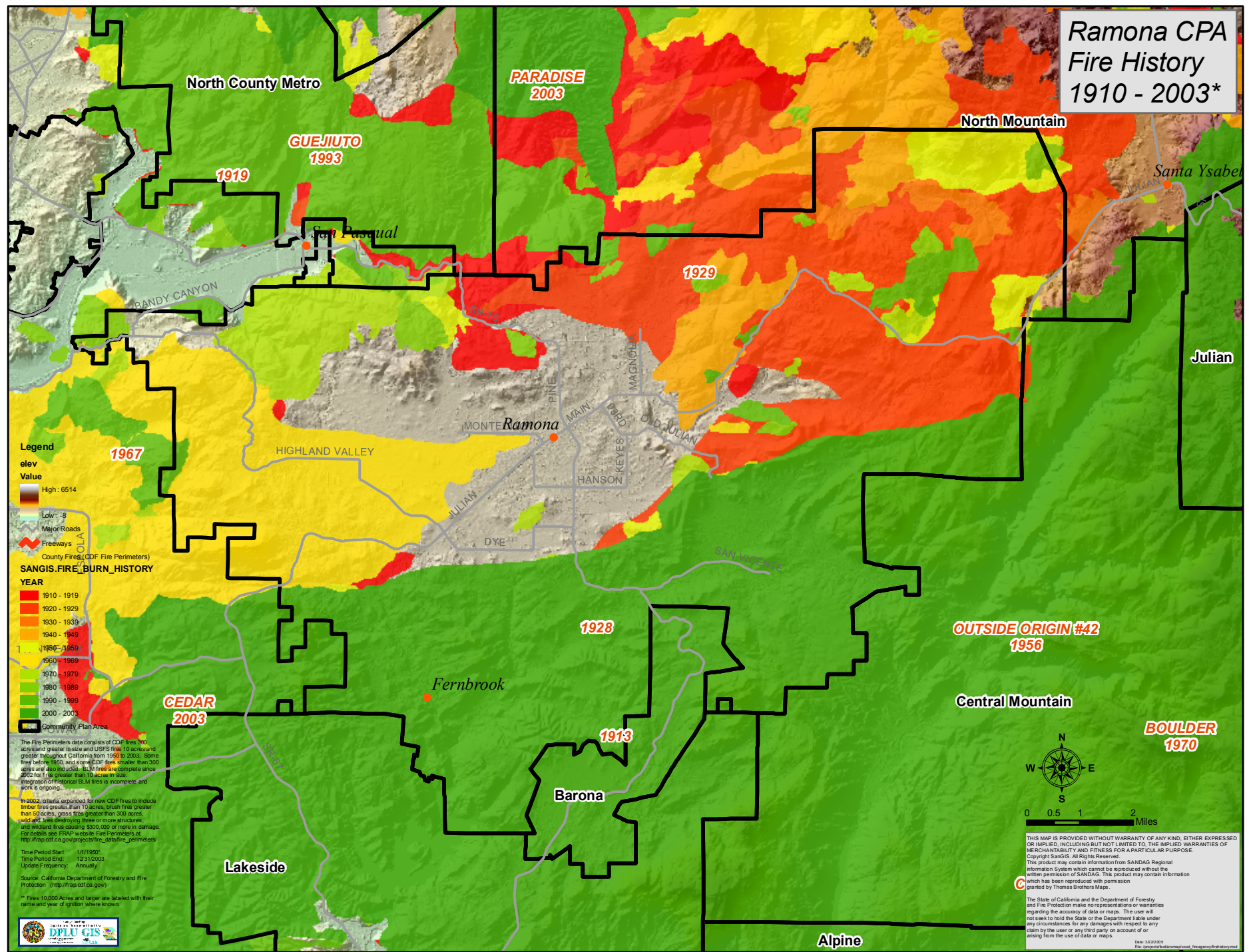
Mudslides and debris flows are common after prolonged periods of rain. At least twice (1995 and 2005) a giant boulder slid off of the mountains in the Mt. Woodson area, and into Hwy 67, blocking the State Highway.

Maps

The Fire History Map, 1910-2003, is displayed on the following page.

The Fire History Map, 1996-2007, follows.

Ramona CPA Fire History 1910 - 2003*



RAMONA COMMUNITY PROTECTION & EVACUATION PLAN
SECTION D – MITIGATION STRATEGY

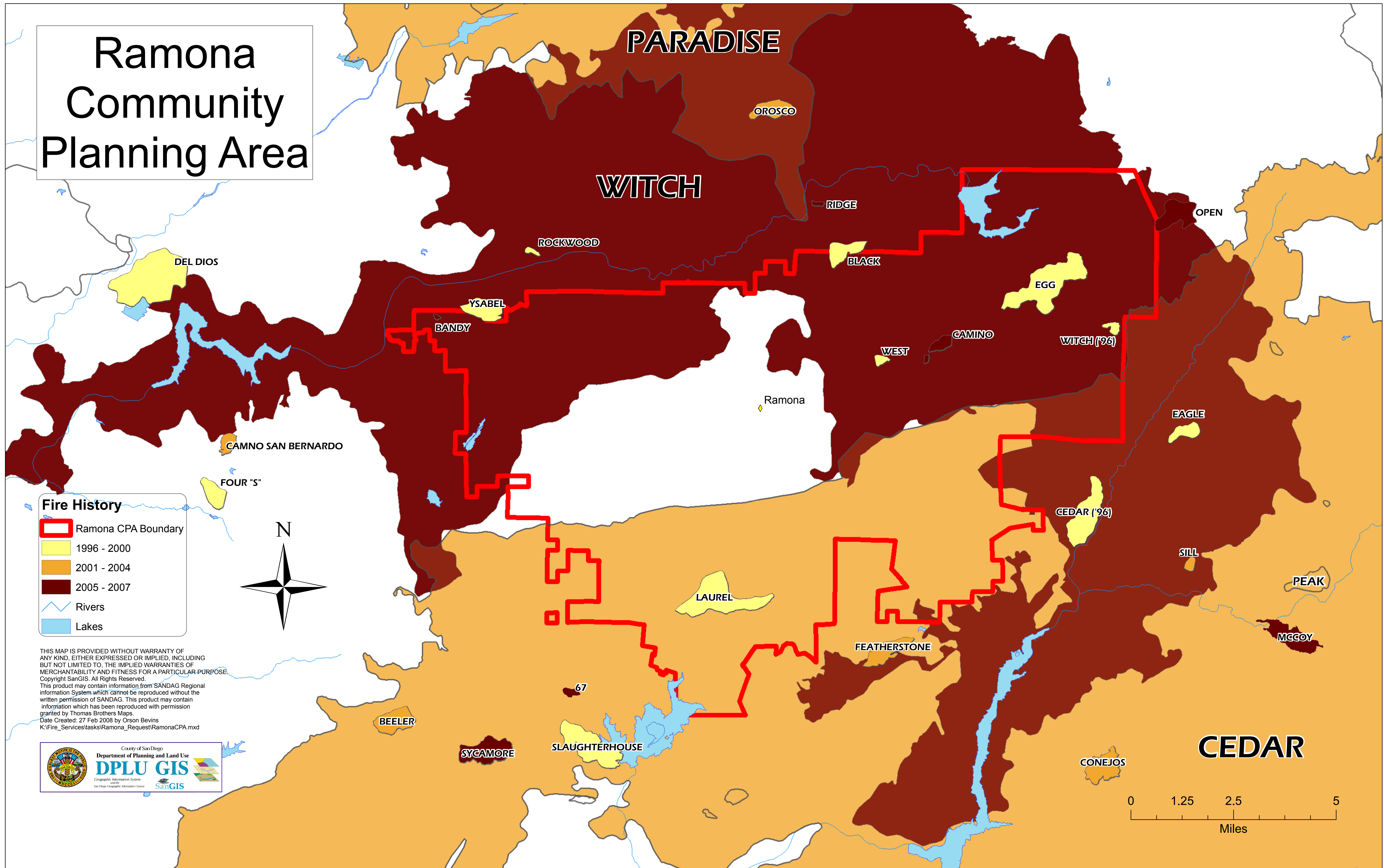
Mitigation Strategy & Action Plan

The County of San Diego has developed an Action Plan with ten specific goals and many supporting actions to help accomplish the goals. Two of the Goals associated with the coastal areas do not apply to Ramona. The most significant Goals that do apply to our area are as follows:

- Goal 1: Promote disaster resistant future development.
- Goal 3: Build and support local capacity and commitment to become less vulnerable to hazards.
- Goal 4: Enhance hazard mitigation coordination and communication with federal, state, local and tribal governments.
- Goal 5: Reduce the possibility of damage and losses ... due to dam failure.
- Goal 6: Reduce the possibility of damage and losses ... due to earthquake.
- Goal 8: Reduce the possibility of damage and losses ... due to landside.
- Goal 9: Reduce the possibility of damage and losses ... due to flooding.
- Goal 10: Reduce the possibility of damage and losses ... due to structural fire/wildfire.

Of the above Goals, number ten (10) is the most critical item for our area. The others are important and could, under the right conditions, be very serious. Our area will be very interested in supporting the County of San Diego with the accomplishment of the established goals. This can be achieved through the various organizations in the area, with volunteers, the Ramona CERT, and through individual participation and training.

Ramona Community Planning Area



RAMONA COMMUNITY PROTECTION & EVACUATION PLAN
SECTION C – COMMUNITY STAKEHOLDERS

Stakeholders

The Community Stakeholders listed below include homeowners' associations, neighborhood groups, and agencies with an interest in the well-being of the community.

Blue Sky Ecological Reserve
Public Information: (858)668-4781
Physical Address: 16275 Espola Rd.
Poway, CA 92064
Mailing Address: P. O. Box 789
Poway, CA 92074

Barona Fire Protection District
Randy Sandoval, Fire Chief: (619)390-2794
1112 Barona Rd.
Lakeside, CA 92040

CAL FIRE

Battalion Chief Randy Scales: (760)789-1150
Mt. Woodson Station, 16310 Hwy 67, Ramona, CA 92065 (760)789-1150
Witch Creek Station, 27330 Hwy 78, Ramona, CA 92065 (760)789-1448
Warner Springs Station, 31049 Hwy 79, Warner Springs, CA 92086 (760)782-3560

County of San Diego
Department of Parks and Recreation
Operations Division, Dist. 3 (Ramona, Mountains, Borrego)
5500 Overland Avenue, Suite 410
San Diego, CA 92123
Public Information: (858)966-1300
Barnett Ranch (Thos. Bros. 1172-H5 – 1500 Deviney Ln./San Vicente Rd.)
Holly Oaks, (Thos. Bros. 1172-E4 – Dye Rd./Southern Oak Rd.)
Luelf Pond Preserve (Thos. Bros. 1172-E4 – 3000 Duck Pond Ln.)
Mt. Gower Open Space Preserve (Thos. Bros. 1172-D6 – 17090 Gunn Stage Rd.)
Ramona Grasslands Preserve (Thos. Bros. 1151-H7 – Highland Valley Rd./Rangeland Rd.)
Simon Preserve (Thos. Bros. 1173-D2 – 23500 Bassett Ct.)

County of San Diego
Department of Parks and Recreation
5500 Overland Avenue, Suite 410
San Diego, CA 92123
Public Information: (858)966-1300
Collier Park
626 E St.
Ramona, CA 92065

RAMONA COMMUNITY PROTECTION & EVACUATION PLAN
SECTION C – COMMUNITY STAKEHOLDERS

County of San Diego
Department of Parks and Recreation
5500 Overland Avenue, Suite 410
San Diego, CA 92123
Public Information: (858)966-1300
Dos Picos Park
17953 Dos Picos Park Rd.
Ramona, CA 92065
Park Number (760)789-2220

County of San Diego
Ramona Airport
George Watson, Airport Manager: (760)788-3366 (Ramona Airport Desk)
2926 Montecito Rd.
Ramona, CA 92065

County of San Diego
Department of Public Works
Ramona Road Station
Jo Beth Lytle: (760)787-3312
116 5th St.
Ramona, CA 92065

Mt. Woodson Homeowners' Association
Preferred Property Managers: (858)569-8773
8963 Complex Dr., Ste. B
San Diego, CA 92123-1416

Ramona Air Attack Base
CAL FIRE
Battalion Chief Ray Chaney: (760)789-1370
United States Forest Service
Deborah Lutz, Air Attack Base Manager: (760)789-1520
2498 Montecito Rd.
Ramona, CA 92065

Ramona Fire Department/CAL FIRE
Battalion Chief Burke Kremensky: (760)788-2250
Station 80, 829 San Vicente Rd., Ramona, CA 92065 (760)788-2222
Station 81, 24462 San Vicente Rd., Ramona, CA 92065 (760)788-2229
Station 82, 3410 Dye Rd., Ramona, CA 92065 (760)788-2269

RAMONA COMMUNITY PROTECTION & EVACUATION PLAN
SECTION C – COMMUNITY STAKEHOLDERS

Ramona Municipal Water District
David Barnum, General Manager: (760)789-1330
105 Earlham
Ramona, CA 92065

Ramona Sheriff's Substation
Lt. Hank Turner: (760)789-9157
1424 Montecito Rd.
Ramona, CA 92065

Ramona Unified School District
Robert W. Graeff, Superintendent of Schools: (760)787-2000
720 9th St.
Ramona, CA 92065

San Diego Country Estates Association
Mario Trejo, General Manager: (760)789-3788
San Vicente Golf Course – golf shop: (760)789-3477
San Vicente Golf Resort: (760)789-8290, ext. 4000
24157 San Vicente Rd.
Ramona, CA 92065

San Diego County Fire Authority Fire Station 85, Intermountain Volunteer Fire Company
Jeremy Christofferson, Chief
Fire Station – (760)789-3710
Physical Address: 25858-A Hwy 78 (at Casner Rd.)
Ramona, CA 92065
Mailing Address: P. O. Box 1362
Ramona, CA 92065

San Diego County Fire Authority Fire Station 93, San Pasqual Volunteer Fire Company
David Davis, Interim Chief
Physical Address: 17701 San Pasqual Valley Rd.
Escondido, CA 92025
Mailing Address: P. O. Box 460520
Escondido, CA 92046
Station No.: (760)480-9924
Fax No.: (760)796-7962

San Diego Rural Fire Protection District
Battalion Chief Dave Nissen: (619)669-1188
14024 Peaceful Valley Ranch Rd.
Jamul, CA 91935

RAMONA COMMUNITY PROTECTION & EVACUATION PLAN
SECTION C – COMMUNITY STAKEHOLDERS

United States Forest Service
Goose Valley Fire Station
Wes Ruise, Division Chief: (760)788-0250
1634 Black Canyon Rd.
Ramona, CA 92065

Younglife Oakbridge
(760)789-6980
P. O. Box 1739
Ramona, CA 92065

The following areas of Ramona have representatives and are stakeholders. Their personal, contact information is not included in this document. For contact information, or to add your neighborhood to this list, please contact the Ramona Community Planning Group at 15873 Hwy 67, Ramona, California, 92065, or kmansolf@gmail.com

- Ballena Valley
- Barona Mesa
- Highland Hills Estates
- Holly Oaks Ranch Community Improvement Organization (HORCI)
- Mussey Grade Road Alliance
- Oak Tree Ranch
- Ramona Terrace Estates Mobile Home Park
- Rancho San Vicente Homeowners' Association
- Rancho Santa Teresa

RAMONA COMMUNITY PROTECTION & EVACUATION PLAN
SECTION D – MITIGATION STRATEGY

Mitigation Strategy & Action Plan

The County of San Diego has developed an Action Plan with ten specific goals and many supporting actions to help accomplish the goals. Two of the Goals associated with the coastal areas do not apply to Ramona. The most significant Goals that do apply to our area are as follows:

- Goal 1: Promote disaster resistant future development.
- Goal 3: Build and support local capacity and commitment to become less vulnerable to hazards.
- Goal 4: Enhance hazard mitigation coordination and communication with federal, state, local and tribal governments.
- Goal 5: Reduce the possibility of damage and losses ... due to dam failure.
- Goal 6: Reduce the possibility of damage and losses ... due to earthquake.
- Goal 8: Reduce the possibility of damage and losses ... due to landside.
- Goal 9: Reduce the possibility of damage and losses ... due to flooding.
- Goal 10: Reduce the possibility of damage and losses ... due to structural fire/wildfire.

Of the above Goals, number ten (10) is the most critical item for our area. The others are important and could, under the right conditions, be very serious. Our area will be very interested in supporting the County of San Diego with the accomplishment of the established goals. This can be achieved through the various organizations in the area, with volunteers, the Ramona CERT, and through individual participation and training.

RAMONA COMMUNITY PROTECTION & EVACUATION PLAN
SECTION E – COMMUNITY PROTECTION & EVACUATION PLANS

Ramona Area Evacuation Routes

Evacuation routes will be selected based upon the emergency situation affecting the Ramona area. **Permission to use these routes during an evacuation should be verified before directing people to them.**

NOTE: All intersections in and around Ramona are subject to traffic control in the event of an emergency. The intersections listed below are examples:

DANGER FROM THE EAST: If the danger is to the east of Ramona and moving towards the area, a westerly evacuation route should be taken. The most direct route to the west is Hwy 67 and Hwy 78 toward San Diego and Escondido. CAUTION: Both of these evacuation routes are susceptible to being overcome by a fast moving firestorm.

HIGHWAY 67 TOWARDS POWAY / LAKESIDE

- In the event of a major evacuation to the west, all traffic control devices along Main Street will be set on flash. The intersections of Main Street at 7th Street, 10th Street and 14th Street will be staffed with a traffic control officer.
- The intersection of San Vicente Road and Warnock Road will be staffed with a traffic control officer and the traffic signals set to flash. This will allow continual movement of the evacuees towards Hwy 67.
- The intersection of Hwy 67 and Dye Road / Highland Valley Road will be staffed with a traffic control officer and the traffic signals set to flash. This will allow continual movement of the evacuees towards Poway and Lakeside.
- The intersection of Hwy. 67 and Mussey Grade Road will be staffed with a traffic control officer. This will allow the continual movement of evacuees towards Hwy. 67.
- NOTE: The intersections of Hwy 67 @ Poway Road and Hwy 67 @ Scripps Poway Parkway MUST be staffed by a traffic control officer, during a major evacuation, to avoid gridlock and extensive traffic delays.

HIGHWAY 78 TOWARDS ESCONDIDO

- The intersection of Main Street and Hwy 78 will be staffed with a traffic control officer and the traffic signals set to flash. This will allow continual movement of the evacuees westbound on Hwy 78 towards Escondido. NOTE: San Diego Police Department and Escondido Police Department must be notified to position traffic control officers, at key choke-points, along Hwy 78 (San Pasqual Road) to keep the continual flow of traffic moving.

RAMONA COMMUNITY PROTECTION & EVACUATION PLAN
SECTION E – COMMUNITY PROTECTION & EVACUATION PLANS

WILDCAT CANYON ROAD TOWARDS LAKESIDE

An alternate to this route might be Wildcat Canyon Rd. to Lakeside. CAUTION: This road is very susceptible to being overcome by a firestorm. Several fatalities occurred in this area during the Cedar Fire of 2003.

- Traffic control signals in the San Diego Country Estates will be set to flash.
- The intersection of San Vicente Road at Gunn Stage and Wildcat Canyon Road will be staffed with a traffic control officer and the traffic signals set to flash. This will allow the continual flow of traffic southbound on Wildcat Canyon Road, if utilized, towards Lakeside. NOTE: Traffic control officers will need to be set up, in Lakeside, at the intersection of Willow Road and Wildcat Canyon Road to avoid gridlock and extensive traffic delays.

DANGER FROM THE WEST: If the danger is to the west of Ramona and moving towards the area, an eastward evacuation route should be taken. The safest eastward route will be on Hwy 67 east, which turns into Hwy 78, and continue on Hwy 78 towards Santa Ysabel, Julian and Borrego Springs.

- In the event of a major evacuation to the east, all traffic control devices along Main Street will be set on flash. The intersections of Main Street at 7th Street, 10th Street and 14th Street will be staffed with a traffic control officer.
- The intersection of Main Street and 10th Street will be staffed with a traffic control officer and the traffic signals set to flash. This will allow continual movement of the evacuees eastbound on Hwy 78 towards Santa Ysabel and Julian.
- The intersection of Hwy. 67 and Mussey Grade Road will be staffed with a traffic control officer. This will allow the continual movement of evacuees towards Hwy. 67.
- The intersection of Hwy 67 and Dye Road / Highland Valley Road will be staffed with a traffic control officer and the traffic signals set to flash. This will allow continual movement of the evacuees through Ramona.
- The intersection of Hwy. 78 and Old Julian Hwy. will be staffed with a traffic control officer to allow SDCE evacuees to access Hwy. 78.

NOTE: The intersection of Hwy 78 and Hwy 79 in Santa Ysabel will need to be staffed by a traffic control officer to avoid gridlock and extensive traffic delays.

RAMONA COMMUNITY PROTECTION & EVACUATION PLAN
SECTION E – COMMUNITY PROTECTION & EVACUATION PLANS

DANGER FROM THE NORTH: If the danger is to the north of Ramona and moving towards the area, again, the evacuation should be either of the routes described above: Hwy 67 west or Wildcat Canyon Rd. south toward Lakeside. Hwy 78 east toward Julian might be an option if the fire is not near that part of town. Always use good judgment.

- In the event of a major evacuation to the southwest, all traffic control devices along Main Street will be set on flash. The intersections of Main Street at 7th Street, 10th Street and 14th Street will be staffed with a traffic control officer.
- The intersection of San Vicente Road and Warnock Road will be staffed with a traffic control officer and the traffic signals set to flash. This will allow continual movement of the evacuees towards Hwy 67.
- The intersection of Hwy 67 and Dye Road / Highland Valley Road will be staffed with a traffic control officer and the traffic signals set to flash. This will allow continual movement of the evacuees towards Poway and Lakeside.
- The intersection of Hwy. 67 and Mussey Grade Road will be staffed with a traffic control officer. This will allow the continual movement of evacuees towards Hwy. 67.

NOTE: The intersections of Hwy 67 @ Poway Road and Hwy 67 @ Scripps Poway Parkway MUST be staffed by a traffic control officer, during a major evacuation, to avoid gridlock and extensive traffic delays.

DANGER FROM THE SOUTH: If the danger is coming from the south and moving toward the area, two routes will move the evacuees to the north. First is Hwy 78 west towards Escondido, and second is Hwy 78 east, if the danger is not towards Poway or Lakeside areas. Again, always use good judgment and leave an area as soon as possible to avoid danger.

- In the event of a major evacuation to the northeast, all traffic control devices along Main Street will be set on flash. The intersections of Main Street at 7th Street, 10th Street and 14th Street will be staffed with a traffic control officer.
- The intersection of Hwy. 67 and Mussey Grade Road will be staffed with a traffic control officer. This will allow the continual movement of evacuees towards Hwy. 67.
- The intersection of Main Street and 10th Street will be staffed with a traffic control officer and the traffic signals set to flash. This will allow continual movement of the evacuees eastbound on Hwy 78 towards Santa Ysabel and Julian.
- The intersection of Hwy. 78 and Old Julian Hwy. will be staffed with a traffic control officer to allow SDCE evacuees to access Hwy. 78.

RAMONA COMMUNITY PROTECTION & EVACUATION PLAN
SECTION E – COMMUNITY PROTECTION & EVACUATION PLANS

NOTE: The intersection of Hwy 78 and Hwy 79 in Santa Ysabel will need to be staffed by a traffic control officer to avoid gridlock and extensive traffic delays.

Possible Emergency Situations

Several emergency situations can cause an evacuation in this area. Fire is the most prevalent danger, but flash flooding, earthquakes, or other events may trigger the need for these routes to be used. When contemplating a specific route, the nature of the danger has to be foremost in the mind of the evacuee and the safest routes should be taken. Typically, the Sheriff's Deputies in the area will give directions for an evacuation and instructions as to where to go and what route to follow. The individual should be aware of his or her surroundings/circumstances, keep up with the news, and take action personally if they or their family seem to be in danger.

Safety Zones and Fire Breaks

In the Ramona area, there are several places where people could assemble for a few hours and be relatively safe from most dangers that might force people to seek safety. It will depend on the danger. Places with open space and plenty of room to park, but not without water and restroom facilities are described below. The only large fire breaks in the area are the natural ones created where the grass is still green in the summer such as golf courses and baseball fields. **Permission to use these places as safety zones should be verified before directing people to them.**

Possible areas.

- Ramona High School (TB 1172 G-1), about 1 mile south of Main Street on 1401 Hanson Lane.
Large lot and open space.
- Ramona Airport (TB 1152 B-6) at 2450 Montecito Road.
Large lot and open space.
- Ramona Community Park (TB 1152 H-4) at Aqua Ln. and 2nd Street is also another great location.
Large lot and open space.

SDCE

- James Dukes Elementary (TB 1173 G-3) at 24908 Abalar Way has a large area to assemble.
Large lot and open space.
- Barnett Elementary (TB 1173 E-2) at 23925 Couna Way.

Shelters and Assembly Areas

RAMONA COMMUNITY PROTECTION & EVACUATION PLAN
SECTION E – COMMUNITY PROTECTION & EVACUATION PLANS

Primary shelters. There are two primary Emergency Evacuation Shelters in the Ramona Area. It is also very important to be aware of other potential shelters in the neighboring communities.

Sheltering

The first priority is the safety of the people in the community. Under the Unified San Diego County Emergency Services Organization Annex G, Care and Shelter Operations, the American Red Cross is responsible for providing food, clothing, shelter and immediate psychological needs and first aid care of people affected by a disaster.*

In disasters, most of the shelter facilities will be in schools (primarily middle and high schools), public buildings/parks and churches. *It is not safe to pre-designate shelter sites.* There are many kinds of disasters that may affect a community: a wind-driven fire, roads closed by flooding, a building damaged by an earthquake, or a weapons of mass destruction disaster.

These events may render potential shelters in a community unsafe. Communities should be aware of the schools, public buildings and churches in their vicinity and in neighboring communities, with the understanding that their use as a shelter will be determined at the time of the disaster.

Responsibility for notifying the Red Cross of an incident requiring shelter operations rests with the Incident Commander at the scene or by the Office of Emergency Services. Announcements of shelter openings are made through the Emergency Alert Systems, established public information channels (ex: KOGO), 800-RED-CROSS.

Residents should not proceed to shelters without notification/approval by law enforcement, emergency personnel or through media sources, as this could jeopardize their safety and/or impede the emergency responders.

Red Cross administrative responsibility for mass care and financial control are inseparable. NOTE: “In assuming responsibility for relief, therefore, the Red Cross requires that all funds used by it in extending relief shall be expended in accordance with its established policies, regulations and procedures. Jurisdictions opening shelters or otherwise extending relief to victims of disaster without Red Cross concurrence will assume all financial responsibility for such relief.”

**The American Red Cross (ARC) as mandated by Federal Law 36-USC-3 and reaffirmed in Public Law 93-288 (Federal Disaster Relief Act of 1974), provides disaster relief in peacetime.*

RAMONA COMMUNITY PROTECTION & EVACUATION PLAN
SECTION E – COMMUNITY PROTECTION & EVACUATION PLANS

Community Alert and Notification Plans

The San Diego Emergency Alert System (EAS) covers the entire County. Two radio stations, KOGO, AM 600, and KLSD, AM 1360, have been provided with back-up generators and are the primary Emergency Alert radio stations for our community. There is also a small community radio station located in Potrero, KJBQ FM 103.3 that will transmit approved community alert messages. The station cannot currently be received in most places in our area but the owner is attempting to locate an antenna and transmitter on Los Pinos Mountain. If that effort is successful, most of our community will be able to receive that station also.

The Sheriff's Communication Center has a reverse 911- callout system, known as the Community Emergency Notification System (CENS), to notify residents in the event of an emergency. This system will automatically call the published and unpublished landline phone numbers of residents in an affected area with a recorded message. It is an additional tool that can be used in the event of an emergency, in addition to Sheriff's Deputies and the EAS.

The following is the general sequence of events during an emergency that may involve an evacuation.

1. During a critical incident where residents will be evacuated, the first responders on scene will be Sheriff's Deputies who are either working or called out.
2. They will meet with Fire Department personnel who will advise them of the critical area that needs to be evacuated. Once these areas are identified, the Sheriff's Deputies are responsible for the evacuation.
3. The Sheriff's Deputies will notify their sergeant, who will determine what resources will be needed. If additional deputies are needed, he will make a request for the manpower necessary to get the evacuation done.
4. All deputies in the immediate area are called out and then go to the surrounding areas. This would include all major stations, if necessary. There would be no problem getting the necessary manpower.
5. A command post will have been established which deputies report to. They will be given their assignments.
6. Once the order to evacuate is given, the deputies will start the evacuation process. They will go to the designated area and, with the use of their car loud speaker, make the announcement to evacuate. At the same time deputies will be going house-to-house advising people to leave their residence and telling them of a safe route to take.
7. If ASTREA (helicopter) is available, they will also make announcements over their loudspeaker to evacuate.

RAMONA COMMUNITY PROTECTION & EVACUATION PLAN
SECTION E – COMMUNITY PROTECTION & EVACUATION PLANS

8. The Sheriff's Department may get help from the California Highway Patrol and/or the US Border Patrol if needed.

Note: Law Enforcement Officers can not force a person to evacuate, they can only advise the person to leave his residence, it's up to the individual to make the choice. In an emergency where time is critical and a person refused to evacuate, he is on his own. We will not risk lives to help somebody who puts himself or herself in harms way when other people need the services. The only exception to the rule is if there are children involved. A parent cannot put his children at risk. If children are involved in a forced evacuation and the parent refuses to evacuate and keep the children with him, he can be arrested and the children removed to a safe place.

Maps

The map on the next page shows the Sheriff's Department, Ramona Command Evacuation Route Map for Ramona.

The following map shows the Sheriff's Department, Ramona Command Zone Map.

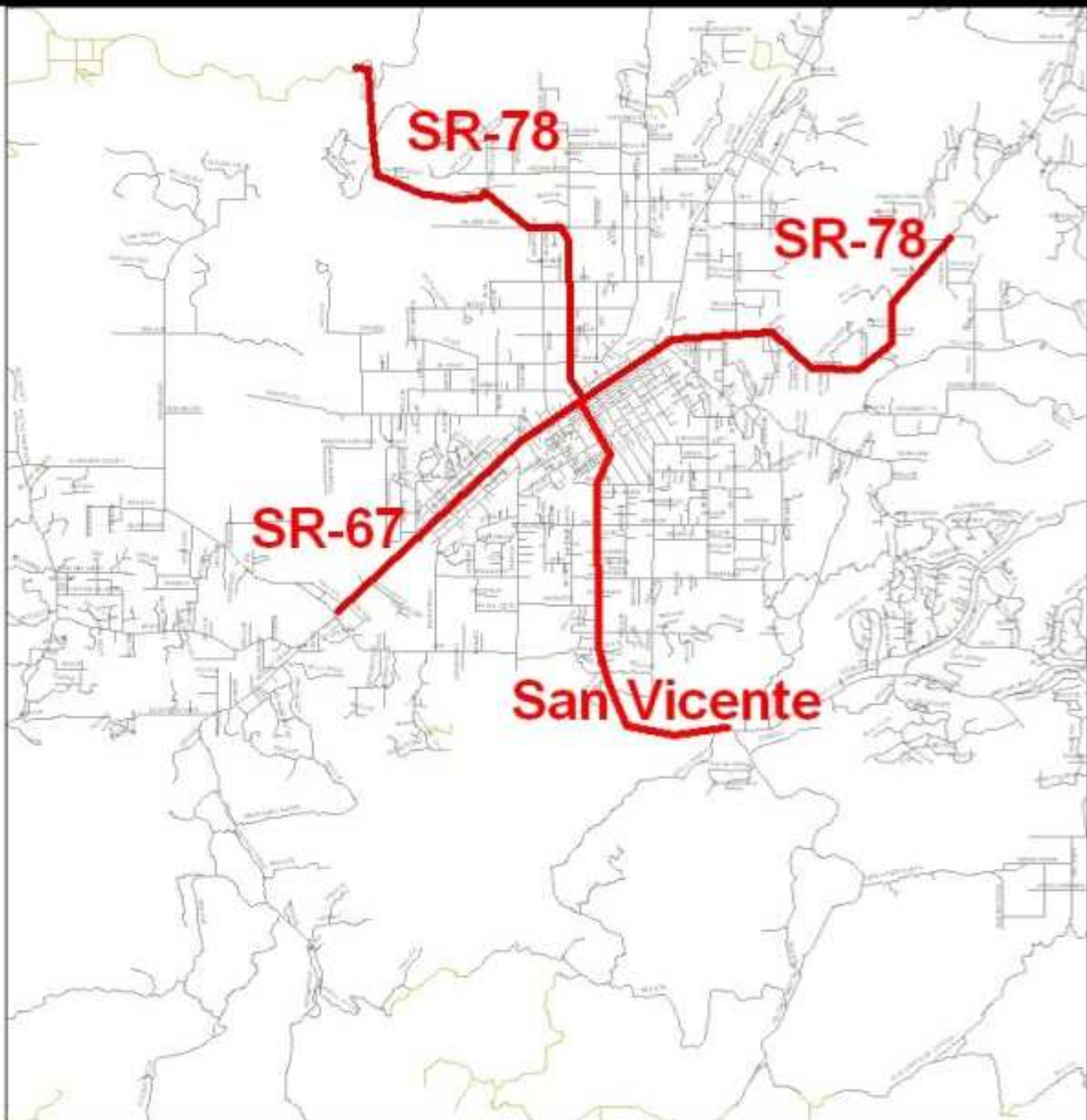


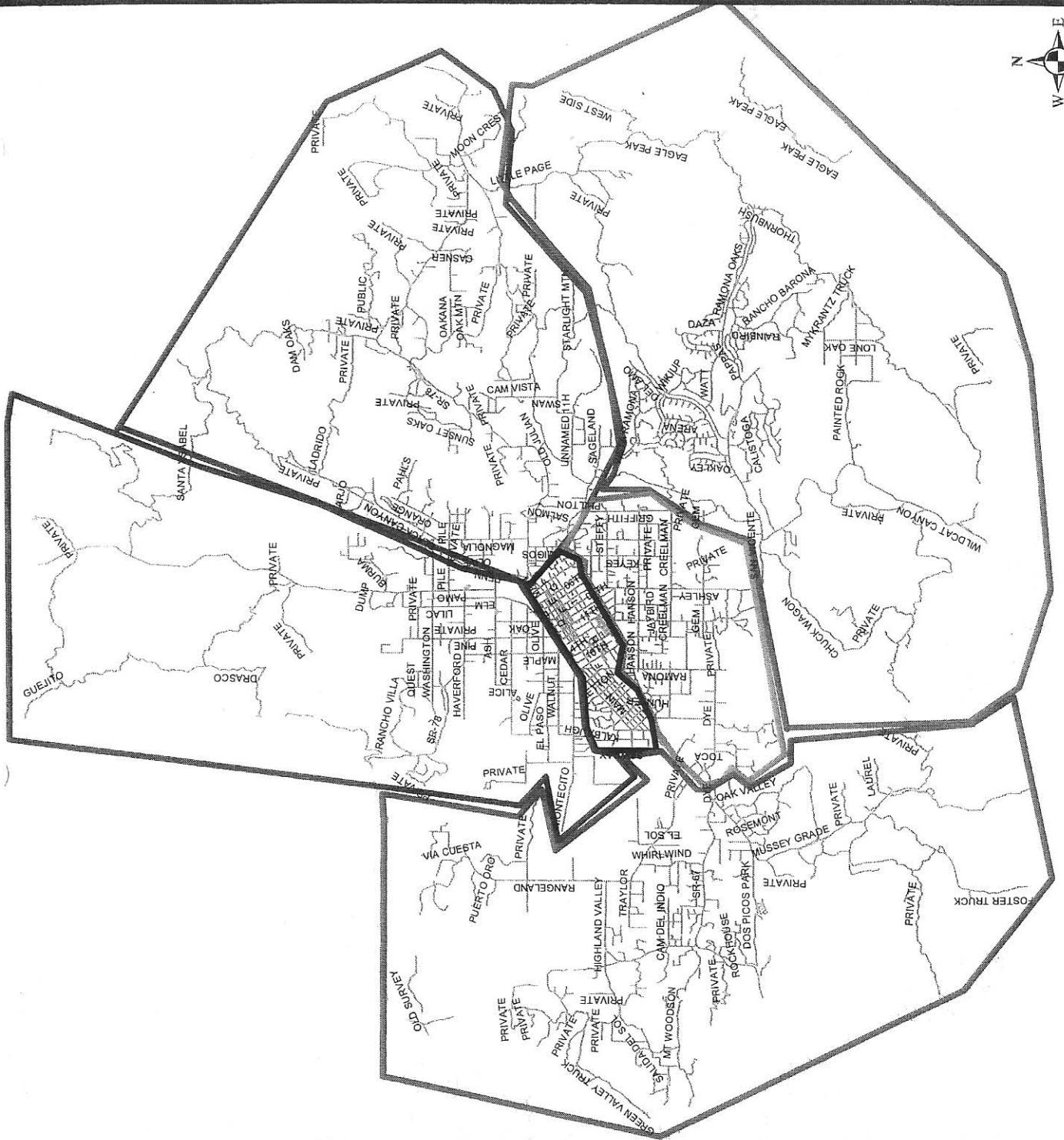
Ramona Command

Evacuation Routes



SanGIS is a web-based Geographic Information System (GIS) that provides a variety of services to the public. It is a powerful tool for analyzing and displaying spatial data, and it is used by a wide range of users, from individual citizens to government agencies. SanGIS is a valuable resource for anyone interested in the geography of San Diego County.





Zone 44-6

RAMONA COMMUNITY PROTECTION & EVACUATION PLAN

SECTION F: FIRE DEPARTMENT RESPONSE PLAN

Incident Type	First Alarm					Second Alarm					Third Alarm							
	Eng	Res	Med	Trk	BC	DC	Eng	Res	Med	Trk	BC	DC	Eng	Res	Med	Trk	BC	DC
Medical Aid	1*		1				SC		SC		N		D	D	D		1	N
Medical Aid-CPR	1*	1	1				SC		SC		N		D	D	D		1	N
T/C	1*	1	1				SC	SC	SC		N		D	D	D		1	N
T/C-Cut & Rescue	1	1	1		1		SC	SC	SC		SC	N	D	D	D		SC	N
Vehicle Fire	1		1				1				N		SC	SC	SC		1	N
Vehicle Fire-Large	2*		1		1		2*				N		SC	SC	SC		SC	N
Structure Fire-SM	3*	1	1		1		3*	SC	SC	SC	1	N	3*	SC	SC	SC	1	1
Structure Fire-LG	4*	1	1		1		3*	SC	SC	SC	1	N	3*	SC	SC	SC	1	1
Vegetation Fire	2				1		(In addition to standard CDF Response)											
Aircraft Fire/Crash	2*	1	1		1		3*	SC	SC		1	N		Special Call				
Haz Mat	1*	1	1		1			Special Call				N		Special Call				1
Public Service	1							Special Call			N							
Debris Fire	1							Special Call			N							
Smoke Check	1							Special Call			N							

SC = Special Call/Special Request
D = Annex "D"
N = Notification Only
(*)= Utilize Schedule B Engines when available; Minimum of two (2) Type 1 Engines to be dispatched on all structure fire responses.
(*)= For medical aids & TC's in Sta. 82's IA, start one unit from Ramona when available.

RAMONA COMMUNITY PROTECTION & EVACUATION PLAN
SECTION G – LAW ENFORCEMENT RESPONSE PLANS

Law Enforcement Response Plans

The Sheriff's Department will be represented by liaison with the Incident Command. When fire officials direct, or if Sheriff's deputies see that it is necessary to conduct an evacuation advisory of the community, they will provide the evacuation advisory in the areas with most imminent threat first. The evacuation advisory will be based on the information known at the time.

Depending on circumstances, there may be time to collect valuables, or the evacuation advisory may be urgent, where there is only time for evacuees to get into their vehicle and follow the route that the deputy provides. This underscores the importance of preparation on the part of residents.

Citizens have the legal right to refuse to evacuate, however if this act endangers children, they are subject to arrest. If a citizen refuses an evacuation advisory he/she does so at his/her own peril, and assumes the inherent risks.

In the event that the County activates a computerized mass phone calling disaster alert system, the call may provide directional information and other important instructions. Residents need to be aware that such a system only calls land line telephones and will not call cell phones. If telephone poles and wires close to the disaster are damaged, the system may not activate in a particular area.

After an area has received an evacuation advisory, the Sheriff's Department will, if possible, conduct patrols to prevent theft and looting.

REGARDING PETS AND LIVESTOCK (Please also reference Section H – Animal Services):

Always keep identification on your pets and take photographs for identification purposes. Consider microchipping your animal to permanently identify them and make sure to keep your contact information current.

In addition to your regular supply of pet food, have at least a week worth supply of food and water on hand to use during a disaster.

Have a leash, harness or carrier for each animal ready, in an easily accessible place in the house, in case you have to leave in a hurry.

Make sure your family knows the "evacuation plan" and has contact information for friends to assist you if necessary. Don't wait until the last minute to leave your house; this can make the difference between taking your animals and leaving them behind.

RAMONA COMMUNITY PROTECTION & EVACUATION PLAN
SECTION G – LAW ENFORCEMENT RESPONSE PLANS

LAW ENFORCEMENT RESOURCES

Law Enforcement Resources

The Ramona area is served primarily by the County of San Diego Sheriff's Department. The Sheriff's Department has offices nearby in Ranchita, Julian, and Poway. The California Highway Patrol provides support of the highway system. Both of these organizations work well together and give very good coverage no matter what the problem is. The following list gives quick contact information and a summary of their responsibilities.

Ramona Sheriff's Substation. 1424 Montecito Road, Ramona, Ca. 92065.
(760)789-9157, Fax (760)788-9077, Dispatch (858)565-5200.

1. Acts as incident commander during law enforcement emergencies.
2. Two communication vehicles located in San Diego.
3. Provides crowd and traffic control.
4. Provides tactical communication.
5. Establishes and maintains ingress and egress routes for emergency vehicles
6. Provides perimeter control
7. Provides security at the scene.
8. Provide community evacuation warnings.

California Highway Patrol. 1722 Main, El Cajon, Ca. (619) 401-2000; dispatch (858) 637-3800; www.chp.ca.gov.

RAMONA COMMUNITY PROTECTION & EVACUATION PLAN
SECTION H – ANIMAL SERVICES

Animal Services

Response Plan:

What we do for you.

County of San Diego, Department of Animal Services (DAS) is the agency responsible for orchestrating, directing, and responding to disasters involving animals within San Diego County. The Department works closely with other animal rescue groups, such as the San Diego Humane Society (SDHS) and their Animal Rescue Reserve (ARR). The Department takes direction from the Sheriff's Department, CAL FIRE, or the local Fire Department, whomever is Incident Commander of that disaster.

Owners need to contact DAS's 24 hour emergency number (619-236-2341) if they need assistance with evacuating their animals. However, owners are encouraged to evacuate their own animals and to evacuate early. Network with your neighbors and friends for help if you do not have a trailer to evacuate your large animals and/or need assistance with your smaller animals. Train your livestock to load into a trailer. A disaster emergency is not the time to teach your animal to load. If the animals can't be loaded readily, they may need to be left at the scene. Never turn your animals loose. They are safer in their pen.

Plan ahead and have a place to go with your animals. If it is a mandatory evacuation, it is the Department's responsibility to provide you with a location to evacuate to. If it is a voluntary evacuation, you will need to find a place to take your animals.

The Department encourages people to put together a disaster packet for each animal on the property. The packet should include photographs of the animal, owner information and alternate contact information. The officers can take this packet at the same time they evacuate the animal. This will help expedite reuniting the animal with its owner. The officers may or may not have time to post a notice on the property advising of the impoundment. The Department encourages all animal owners to have their pets microchipped and to make sure their information is kept current with the microchip company.

Once a disaster is declared, DAS will have a supervisor or a manager in the Emergency Operations Center (EOC), in our dispatch center, at the scene/staging area, and will coordinate evacuations via this chain of communications. The Department supervisor will talk to the dispatch office who will normally have a supervisor at the evacuation site with DAS staff. A representative from the Department will attend all the briefings at the command post and pass updates along to staff.

At the staging area, DAS vehicles and trailers will stage for a request to evacuate. SDHS, ARR and other approved groups will also stage at this same location. The supervisor at the scene will keep track of what address specific officers are sent to; and when they return with animals, will keep track of what animals came from what address. They will

RAMONA COMMUNITY PROTECTION & EVACUATION PLAN
SECTION H – ANIMAL SERVICES

also coordinate processing of animals brought in by the general public and/or animal owners. There will either be a temporary shelter set up at the staging area or nearby, or the vehicles will take the animals directly to an approved evacuation site. Small animals may be transported to one of the three DAS animal shelters. This will be at the direction of the staging supervisor.

The Department is there to assist the public with their animals during a disaster; however, planning ahead can make the difference on whether or not your animals survive.

RAMONA COMMUNITY PROTECTION & EVACUATION PLAN
SECTION I – MASS CASUALTY PLAN

The Ramona Fire Department follows the County of San Diego Annex D to manage all mass casualty incidents.

Activation of Annex D

1. A confirmed event has occurred that is a multi-casualty incident which exceeds the capabilities of the immediately available responding emergency contingent, or the patient care capabilities of proximate facilities.
2. An event is imminent, or has occurred, of such magnitude in a populated area that extensive casualties are inevitable, i.e., structure collapse, major transportation emergency, hazardous materials release.

Fire Department responsibilities

1. Assumes the role of Incident Commander under SEMS criteria and manages medical operations within the statewide fire managements system known as the Incident Command System. As multi-casualty incidents overwhelm the initial responding resources, the Incident Commander (IC) delineates and expands operational procedures.
2. Provide scene management.
3. Provide firefighting.
4. Provide extrication.
5. Provide rescue.
6. Provide initial triage.
7. Maintains communication with the EOC.
8. Maintains communications with the Base Hospital.
9. Coordinates air operations at the scene.
10. Determines the need for all additional resources and orders them as necessary.
11. Activate CERT, Red Cross or other assisting agencies as needed.

RAMONA COMMUNITY PROTECTION & EVACUATION PLAN
SECTION J – SHELTERING

Sheltering

The first priority is the safety of the people in the community. Under the Unified San Diego County Emergency Services Organization Annex G, Care and Shelter Operations, County of San Diego Health and Human Services Agency (HHSA) is responsible for providing food, clothing, shelter and immediate psychological needs and first aid care of people affected by a disaster.* Mass care and shelter is an organized way of providing safe havens for large numbers of people temporarily displaced from their dwellings by natural, technological or man-made emergencies or disasters. Annex G is specifically designed to address the need for temporary shelter during large-scale emergencies and/or major disasters. This plan does not apply to day-to-day emergencies. Typically, the American Red Cross Chapter is capable of responding to day-to-day emergencies that require sheltering, using their own resources.

In disasters, most of the shelter facilities will be in schools (primarily middle and high schools), public buildings/parks and churches. *It is not safe to pre-designate shelter sites.* There are many kinds of disasters that may affect a community: a wind-driven fire, roads closed by flooding, a building damaged by an earthquake, or a weapons of mass destruction disaster.

These events may render potential shelters in a community unsafe. Communities should be aware of the schools, public buildings and churches in their vicinity and in neighboring communities, with the understanding that their use as a shelter will be determined at the time of the disaster.

Responsibility for notifying the Red Cross of an incident requiring shelter operations rests with the Incident Commander at the scene or by the Office of Emergency Services. Announcements of shelter openings are made through the Emergency Alert Systems, the AlertSan Diego phone notification system, posted on www.SDCountyEmergency.com, and also on established public information channels (ex: KOGO AM 600), 858-309-1200 and the 2-1-1 information and referral toll-free number (effective July 2005).

Residents should not proceed to shelters without notification/approval by law enforcement, emergency personnel or through media sources, as this could jeopardize their safety and/or impede the emergency responders.

RAMONA COMMUNITY PROTECTION & EVACUATION PLAN
SECTION J – SHELTERING

Red Cross administrative responsibility for mass care and financial control are inseparable. As noted in Annex G: “In assuming responsibility for relief, therefore, the Red Cross requires that all funds used by it in extending relief shall be expended in accordance with its established policies, regulations and procedures. Jurisdictions opening shelters or otherwise extending relief to victims of disaster without Red Cross concurrence will assume all financial responsibility for such relief.”

**The American Red Cross (ARC) as mandated by Federal Law 36-USC-3 and reaffirmed in Public Law 93-288 (Federal Disaster Relief Act of 1974), provides disaster relief in peacetime.*

RAMONA COMMUNITY PROTECTION & EVACUATION PLAN
SECTION K – IMPORTANT PHONE NUMBERS & CONTACT INFORMATION

Important Phone Numbers, Contact Information and Websites

Included in this section are phone numbers for a variety of contacts that may be useful before, during, and after a disaster. Various disaster-related websites are also listed. Schools are listed for easy reference only.

FIRE/DISASTER INFORMATION

911: For any *life threatening emergency* – ambulance, fire, law enforcement services.

211: Information resource during a disaster. www.211sandiego.org

AlertSan Diego – To Register Cell Phones (9-1-1 Database): www.readysandiego.org

American Red Cross: (858)309-1200 www.sdarc.org

Animal Services

County of San Diego, Department of Animal Services:

(non-emergency number): (760)746-7307 www.sddac.com

(24-hour emergency number): (619)236-2341

San Diego Humane Society and SPCA:

(non-emergency number): (619)243-3466 www.sdhumane.org

Animal Rescue Reserves (24-hour emergency number): (619)299-0871

Amateur Radio Emergency Service (A.R.E.S.): (760)788-6932; (760)315-2879
www.roars.net, www.sdgaes.net

Barona Fire Protection District: (619)390-2794 www.baronafire.com

CAL FIRE – San Diego Unit: (619)590-3100 www.fire.ca.gov

Mt. Woodson Station: (760)789-1150

Witch Creek Station: (760)789-1448

Warner Springs Station: (760)782-3560

CAL FIRE, Fire Information Line: (619)590-3160

California Highway Patrol (El Cajon Office): (619)401-2000

<http://www.chp.ca.gov/index.php>

Dispatch: (858)637-3800

County Supervisor Dianne Jacob: (619)531-5522, (800)852-7322 www.diannejacob.com

Forest Service (U.S.), Palomar Ranger District Headquarters: (760)788-0250

www.fs.fed.us/r5/cleveland/

USFS San Vicente Fire Station: (760)789-0739

USFS Goose Valley Fire Station: (760) 788-0250

USFS Pine Hills Fire Station: (760)765-0104

RAMONA COMMUNITY PROTECTION & EVACUATION PLAN
SECTION K – IMPORTANT PHONE NUMBERS & CONTACT INFORMATION

Emergency Communications Center: (619)557-5262

Office of Emergency Services (County): (858)565-3490 www.sdcountyemergency.com

Ramona Air Attack Base

CAL FIRE: (760)789-1370

United States Forest Service: (760)789-1520

Ramona Airport: (760)788-3366 www.co.san-diego.ca.us/dpw/airports/ramona.html

Ramona CERT: (760)788-2222 Email Address: cert@rmwd.org

Ramona Fire Department: (760)788-2250 www.rmwd.org/fire-department

Fire Marshall/Fire Prevention Office: (760)788-2243, (760)788-2244

Station 80: (760)788-2222

Station 81: (760)788-2229

Station 82: (760)788-2269

Ramona Municipal Water District: (760)789-1330 www.rmwd.org

Ramona Outback Amateur Radio Society (R.O.A.R.S.): (760)788-6932; (760)315-2879 www.roars.net

**Ramona Road Station: (760)787-3312, After Hours and Weekend Emergency:
(858)565-5262. Stormwater Hotline: (888)846-0800**

Ramona Sheriff's Substation: (760)789-9157

www.sdsheriff.net/patrolstations/ramona.html

Local Non-Emergency Dispatch: (760)789-1200

Sheriff's 24-Hour Dispatch: (858)565-5200

San Diego Gas & Electric, Emergency Line: (800)611-7343 www.sdge.com/index

San Diego Rural Fire Protection District: (619)669-1188 <http://www.sdruralfire.org/>

**San Diego County Fire Authority Fire Station 85, Intermountain Volunteer Fire
Company: (760)789-3710 <http://intermountainfire.org>**

**San Diego County Fire Authority Fire Station 93, San Pasqual Volunteer Fire
Company: (760)480-9924**

www.firedepartments.net/California/Escondido/SanPasqualFireDept.html

**State of California, Department of Transportation (State Highway
Conditions): (800)427-7623 www.dot.ca.gov/cgi-bin/roads.cgi**

RAMONA COMMUNITY PROTECTION & EVACUATION PLAN
SECTION K – IMPORTANT PHONE NUMBERS & CONTACT INFORMATION

Hospitals

Alvarado Hospital, 6655 Alvarado Rd., San Diego, CA (619)287-3270

Kaiser Permanente, 4637 Zion Ave., San Diego, CA 92120 (619)528-5000

Palomar Medical Center (Trauma Center), 2185 W. Citracado Parkway, Escondido, CA (442)281-5000

Pomerado Hospital, 15615 Pomerado Rd., Poway, CA 92064 (858)613-4000

Scripps Mercy (Trauma Center), 4077 5th Ave., San Diego, CA 92103 (619)294-8111

Sharp Grossmont Hospital, 5555 Grossmont Center Dr., La Mesa, CA 91942
(619)465-0711

UCSD Medical Center (Trauma and Burn Center), 200 W. Arbor Dr., San Diego, CA 92103
(619)543-6222

Media

KOGO AM 600 Radio Newsroom – (858)560-6671

KLSD AM 1360 (Backup to KOGO) – (858)292-2000

San Diego's KGTV Channel 10 – (619)237-6380

Ramona Sentinel – (760)789-1350 www.ramonasentinel.com

Agencies

Aging and Independence Services: (800)510-2020

Bioterrorism (Report suspicious activity): (619)515-6620

Bomb Team (Sheriff): Business: (619)956-4980; Dispatch: (858)565-5200

California Department of Insurance (Insurance/fraud questions): (800)927-4357

Chief Administrative Officer (County), Staff Officer, Public Safety: (619)531-4521

Child Abuse Hotline: (800)344-6000

Code Compliance (County): (760)940-2893

Planning and Development Services: (800)411-0017

RAMONA COMMUNITY PROTECTION & EVACUATION PLAN
SECTION K – IMPORTANT PHONE NUMBERS & CONTACT INFORMATION

Elder Help of San Diego – (619)284-9281

Federal Bureau of Investigation: (858)320-1800

Federal Emergency Management Agency Individual Assistance (FEMA): (800)621-3362

Fire Safe Council of San Diego County: (619)562-0096

Health and Human Services Agency: (760)738-2471

Mental Health Department Administration: (619)563-2700

Poison Control: (800)222-1222

San Diego County Access and Crisis Line: (888)724-7240

UC Cooperative Extension (San Diego Office) (858) 694-2845

Help Organizations

Catholic Charities: (619)231-2828

Episcopal Community Services: (619)228-2800

The Extra Mile Ministries: (760)845-3986

Interfaith (for Seniors and Non-Seniors): (760)489-6380

Salvation Army: (619)446-0262

San Diego Habitat for Humanity, Inc.: (619)283-4663

Ramona Commerce

Ramona Chamber of Commerce: (760)789-1311 www.ramonachamber.com

Ramona Senior Center

Ramona Senior Center: (760)789-0440 www.ramonarec.com/senior_center.html

RAMONA COMMUNITY PROTECTION & EVACUATION PLAN
SECTION K – IMPORTANT PHONE NUMBERS & CONTACT INFORMATION

Schools

Ramona Unified School District Office, 720 9th St., Ramona, CA 92065 (760)787-2000
Barnett Elementary School, 23925 Couna Way, Ramona, CA 92065 (760)787-3500
Hanson Elementary School, 2520 Boundary Ave., Ramona, CA 92065 (760)787-2100
James Dukes Elementary School, 24908 Abalar Way, Ramona, CA 92065
(760)788-5060
Montecito High School, 720 9th St., Ramona, CA 92065 (760)787-4300
Mt. Woodson Elementary School, 17427 Archie Moore Trail, Ramona, CA 92065
(760)788-5120
Mt. Valley Academy, 1010 Ramona St., Ramona, CA 92065 (760)787-3600
Olive Peirce Middle School, 1521 Hanson Ln., Ramona, CA 92065 (760)787-2400
Ramona Community School, 1710 Montecito Rd., Ramona, CA 92065 (760)787-3600
Ramona Elementary School, 415 8th St., Ramona, CA 92065 (760)787-4400
Ramona High School, 1401 Hanson Ln., Ramona, CA 92065 (760)787-4000

County, State and Federal Representative Contact List

California Governor: Jerry Brown, State Capital, Sacramento, CA 95814. **(916)445-2841**, FAX (916) 445-4633

California State Assembly 71st District: Brian Jones, District Office
10152 Mission Gorge Road, Santee, CA 92071. **(619) 441-2322**, FAX (619) 441-2327

California State Assembly 77th District: Brian Maienschein, District Office
12396 World Trade Drive, Suite #118, San Diego, CA 92128. **(858)675-0077**
FAX (858)675-0688

California State Senate 36th District: Joel Anderson, El Cajon office, 500 Fesler
Street #201, El Cajon, CA 92020. **(619)596-3136**, FAX (619)596-3140

San Diego County Board of Supervisors, 2nd District: Dianne Jacob, 1600 Pacific
Highway, Room 335, San Diego, CA 92101. **(619)531-5522** or **(800)852-7322**

U.S. House of Representatives 50nd District: Duncan D. Hunter, El Cajon office,
1611 N. Magnolia Avenue, Suite 310, El Cajon, CA 92020. **(619) 448-5201**, FAX (619)
449-2251

U.S. Senate: Barbara Boxer, San Diego office, 600 B Street, Suite 2240, San Diego,
CA 92101. **(619)239-3884**, FAX (202)228-3863

U.S. Senate: Dianne Feinstein, San Diego office, 750 B Street, Suite 1030, San Diego,
CA 92101. **(619)231-9712**, FAX (619)231-1108

RAMONA COMMUNITY PROTECTION & EVACUATION PLAN
SECTION K – IMPORTANT PHONE NUMBERS & CONTACT INFORMATION

Disaster and Disaster Preparedness Websites

<http://www.72hours.org>

<http://www.earthquakecountry.info/roots>

<http://www.extension.org/surviving%20wildfire>

<http://firecenter.berkeley.edu/toolkit/>

<http://groups.ucanr.org/GSOB/>

<http://www.readyforwildfire.org>

<http://www.sdarc.org>

<http://www.sdcounty.ca.gov/oes/index.html>

<http://www.sdcountyemergency.com>

<http://www.usgs.gov>

<http://www.wildfirezone.org>

Fire/Disaster – Agency Related Websites

CAL FIRE Home Page: <http://www.fire.ca.gov>

Links: - Defensible Space
- Fire Information
- Wildland Urban Interface

Federal Emergency Management Agency (FEMA): <http://www.usfa.fema.gov/>

Ramona Municipal Water District (RMWD): <http://www.rmwd.org/>

Ramona Fire Department Link: <http://www.rmwd.org/fire-department>

San Diego County: <http://www.sdcounty.ca.gov/pds/index.html>
<http://www.sdcounty.ca.gov/dpw/index.html>
<http://www.sdsheiff.net/>

San Diego County Office of Emergency Services:
<http://www.sdcounty.ca.gov/oes/index.html>

United State Forest Service (USFS): <http://www.fs.fed.us/>

RAMONA COMMUNITY PROTECTION & EVACUATION PLAN
SECTION K – IMPORTANT PHONE NUMBERS & CONTACT INFORMATION

Community Awareness – Groups

Fire Safe Council: <http://www.firesafesdcounty.org/>

Ramona CERT Email Address: cert@rmwd.org

UC Cooperative Extension

Natural Resource and Consumer Safety

Programming: <http://cesandiego.ucdavis.edu/>

Wildfire Preparedness, Safety and Recovery

Programming: <http://wildfirezone.org/>

Goldspotted Oak Borer: <http://ucanr.org/sites/gsobinfo/>

eXtension Wildfire Information Network (eWIN):

<http://www.extension.org/surviving%20wildfire>

Additional Information

For Kids: <http://www.sparky.org>
<http://www.fema.gov/kids>

Institute for Business & Safety: <http://www.ibhs.org>

National Fire Protection Association: <http://www.nfpa.org>

For the Disabled: <http://www.nfpa.org> & navigate to
Safety Information/For Consumers/Populations

Extended Abstracts from the Human Dimensions of Wildland Fire

Conference October 23 through October 27, 2007, Fort Collins, Colorado:

<http://www.iawfonline.org/pdf/HumanDimensionsExtendedAbstracts.pdf>

RAMONA COMMUNITY PROTECTION & EVACUATION PLAN
SECTION K-1 – RADIO COMMUNICATIONS

Ramona Community Emergency Response Team (CERT) and Ramona Outback Amateur Radio Society (ROARS)

Ramona CERT and ROARS are two Ramona based groups that assist the public and emergency responders during a disaster.

Ramona CERT is sponsored by the Ramona Fire Department and the Ramona Municipal Water District. Formed after the 2003 Cedar fire, Ramona CERT activated during the Witch Creek fire and provided community assistance for nine days in the following areas: shelter operations, traffic control, health-and-welfare, emergency power, hazardous material reporting, and general assistance to the various relief organizations.

Ramona CERT members stay active between disasters with monthly continuing education classes/meetings that are open to the public, and by assisting with community events. For more information on Ramona CERT, please contact the Ramona Fire Department.

ROARS is open to anyone interested in amateur radio communications. ROARS assists the public and emergency responders with communications during disasters. Many people are active members of both CERT and ROARS. For information on ROARS, please go to www.roars.net

The *Action Plan for Activation of Ramona Area CERT AND ROARS Communicators* follows.

RAMONA AREA COMMUNICATIONS PLAN

Communications Plan for Activation & Notification of Ramona Area CERT and Utilization of Amateur Radio Communicators.

April 17, 2014

Prepared by Don Scott, Barry Davis

Introduction

This document describes the action plan for Ramona CERT and 2-way communicators in the event of an emergency or disaster in the Ramona, CA area. Two groups have been identified as possessing the equipment and skills necessary to implement effective 2-way communications and Emergency or Disaster Response services in the Ramona area in the event that other methods are ineffective as a result of an emergency or disaster.

CERT – Community Emergency Response Team members

ROARS – Ramona Outback Amateur Radio Society members

In some case an individual may belong to both groups.

In this document, the term *net* is used to describe a network of communicators. In the case of an emergency or disaster, the nets described herein use voice over 2-way radios. Other communications technologies may also be available and will be used as appropriate.

This plan is organized into four sections: activation procedures, radio information, procedural documents and a confidential section contain g personnel contact information.

1. Activation Procedures

Ramona CERT and Volunteer communicators can be utilized, directed to an EVC (Emergency Volunteer Center Registration Point) or activated by direction of the incident commander i.e. The Local Sponsoring Agency as noted below in the San Diego County Office of Emergency Services Activation Procedure:

Activation Procedures:

All registered San Diego County OA DSW volunteers must be officially activated by his or her Local Sponsoring Agency (LSA) before carrying out any disaster service activities. Official activation is a requirement for the DSW volunteer to receive the benefits and protections of the DSWVP.

The Local Sponsoring Agency will be responsible for documenting DSW volunteers' activation, disaster service activities, and demobilization. Additionally, upon activating a DSW Volunteer Program, the Local Sponsoring Agency must contact OES and report the following:

- On whose authority the DSW Volunteer Program is being activated
- Activation date and time
- Anticipated disaster service activities
- Expected demobilization timeframe

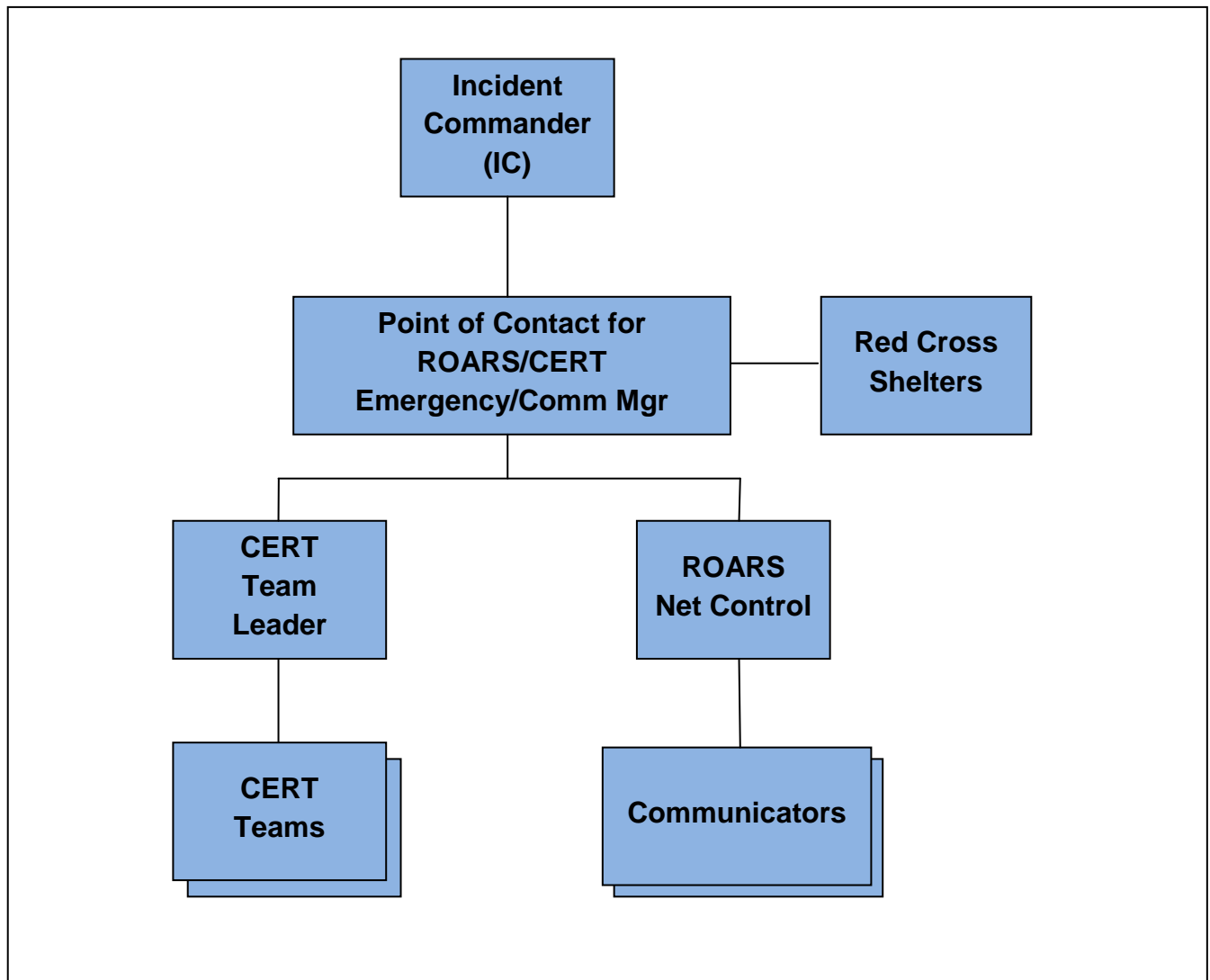
OES can be contacted via:

- Email: oes@sdcounty.ca.gov
- Telephone: (858) 565-3490

A point-of-contact (POC) will be identified (see personnel section below) and will be responsible for activating Ramona CERT and or utilizing the amateur radio net and Family Radio Service (FRS) net. Both nets are expected to be activated due to the limited direct radio coverage in the Ramona area due to the geography. Most ROARS communicators also have FRS equipment. Roars Communicators are skilled at passing traffic between nets.

1.1. Cellular Phone, Text Messaging

Many people have cellular phones which allow text messaging. Text messaging is an effective method for notifying ROARS and CERT personnel. Text messages are stored and forwarded to cellular phones when they are connected to the network. Thus text messaging effectively replaces the need for pagers. Ramona Fire department / Cal Fire can use text messaging to notify ROARS and CERT personnel as needed.



2. Radio Information

This section describes the methods used by various government agencies and the general public for communications in the event of an emergency. Radio channel or frequency information is provided so that scanners or general purpose receivers can be used by the general public.

2.1. Commercial Radio Broadcast Information

The primary Emergency Alert System (EAS) broadcast station in San Diego is KOGO, 600 KHz on the AM broadcast band. Other radio and TV stations may also rebroadcast emergency alerts.

2.2. Family Radio Service Information

The Family Radio Service is an unlicensed (citizen's band) 2-way radio service. FRS channel 1 is the national emergency frequency, 462.5625 Mhz. Citizens can tune into FRS channel 1 for Information or to communicate with the net control during an emergency. Section 3.3 provides an example of the information you should hear on an FRS radio during an emergency.

Many FRS radios have privacy codes or interference eliminator codes. If you have these codes enabled, then you may not be able to hear the emergency traffic or information on FRS channel 1. Use FRS Channel 1 with NO Privacy Code. Consult your radio instructions to determine how to disable privacy codes.

There are many locations in the Ramona area where FRS radios cannot be used to communicate with other areas. In general, FRS radios work well for line-of-sight communications. You may have difficulty with FRS reception if you are in a low spot or canyon. For best results, always keep your radio in an upright position with the antenna pointing skyward. See section 2.4 for a chart showing 2-way radio coverage for the Ramona area.

2.3. Amateur Radio Equipment Information

ROARS operates and maintains the following radio communications facilities. Unless otherwise noted, frequency modulation (FM) is used.

Description	Frequency (Mhz)	Offset	PL Tone	Power Supply	Notes
2-meter repeater 924 Etchvery Street, Ramona	145.300	-600Khz	88.5 hz	SDGE, battery, solar	
70 cm repeater 924 Etchvery Street, Ramona	445.760	-5Mhz	88.5 hz	SDGE, battery, solar	Echolink internet link capable
APRS digipeater Julian, CA	144.390	-	-	Battery, solar	

Other local amateur radio equipment frequently used by ROARS members in the Ramona area.

<i>Description</i>	<i>Frequency (Mhz)</i>	<i>Offset</i>	<i>PL Tone</i>	<i>Power Supply</i>	<i>Notes</i>
2-meter repeater Mount Palomar	147.030	+600Khz	103.5 hz	SDGE, battery,	Owned by ECRA, excellent coverage of the back country, national Weather Service net
2 Meter repeater Mt. Woodson	145.180	-600Khz	107.2	SDGE	W6HDC Repeater Owner
National simplex frequency	146.520	none	none	Not applicable	Difficult to provide coverage in many locations in the area. Repeaters are preferred. See section 3.4

2.4. Ramona Area VHF Simplex Coverage

This chart shows the coverage for 2-way VHF (2-meter) in the Ramona area.

	Fire Station 80	Fire Station 81	Fire Station 82	CDF 16310 Hwy 67	CDF Ramona Airport	S.D. Sherriff	USFS Goose Valley	James Duke Elem	Olive Pierce School	Ramona Elem	Mt. Woodson Elem	N. County Health Svc	SDCE Stores	Ramona Community Ctr	Hwy 78 & Weekend Villa	Dos Picos Park	San Vicente & wildcat Cyn	Old Julian & Vista Ramona	Delamo & Rutherford	Ramona Oaks & Tranquility	Fernbrook	243xx Watt Rd SDCE	Julian Township
Fire Station 80	☐	☐	●	●	●	●	●	?	?	☺	●	?	?	☺	?	?	☐	☺	☐	☐	☐	☺	☺
Fire Station 81		☐	☐	☐	☐	☐	☐	☐	☐	☐	☐	☐	☐	☐	☐	☐	☐	☐	☐	☐	☐	☐	☐
Fire Station 82			☐	☐	☐	☐	☐	☐	☐	☐	☐	☐	☐	☐	☐	☐	☐	☐	☐	☐	☐	☐	☐
CDF 16310 Hwy 67			☐	☐	☐	☐	☐	☐	☐	☐	☐	☐	☐	☐	☐	☐	☐	☐	☐	☐	☐	☐	☐
CDF Ramona Airport			☐	☐	☐	☐	☐	☐	☐	☐	☐	☐	☐	☐	☐	☐	☐	☐	☐	☐	☐	☐	☐
S.D. Sherriff																							
USFS Goose Valley																							
James Duke Elem																							
Olive Pierce School																							
Ramona Elem																							
Mt. Woodson Elem																							
N. County Health Svc																							
SDCE Stores																							
Ramona Community Ctr																							
Hwy 78 & Weekend Villa																							
Dos Picos Park																							
San Vicente & Wildcat Cyn																							
Old Julian & Vista Ramona																							
Delamo & Rutherford																							
Ramona Oaks & Tranquility																							
Fernbrook																							
243xx Watt Rd SDCE																							
Julian Township																							

Key: -- no direct communication possible
☐ communication barely possible, open squelch required
● communication possible, readable but weak
☺ strong signal
? unknown, at this time

3. Procedures

3.1. Net Activation Procedure

1. In the event of unusual weather or any other emergency, it is requested that all CERT and ROARS members use the ROARS 2-meter repeater (145.300 Mhz, -600 Khz offset, 88.5 PL tone) and attempt to contact net control.
Monitoring the Family Radio Service channel 1 (no PL or privacy tones) is also recommended. Monitoring the ECRA Mount Palomar 2-meter repeater (147.030 Mhz, +600 Khz offset, 103.5 PL tone) as well as the Mt. Woodson 2 meter Repeater (145.300 – 600 Khz 107.2PL Tone) is also recommended.
2. If there is no directed net operating, use the net control script and procedures to establish a directed net.
 - Net control script is in a later section.
 - Indicate the reason for the net activation
 - Call roll of ROARS or Ramona CERT personnel
 - Maintain list of check-ins, check-outs, and time
 - Assist in passing traffic
 - Maintain control of net frequency use
 - Prioritize emergency or priority traffic
 - Assign assistant net control operators as needed
3. Maintain efficient operation of the net as needed

3.2. Amateur Radio Net Control Script

The following script can be used by a licensed amateur radio operator to begin a net during an emergency or disaster situation. This net may be started on one of the frequencies listed in section 2.3 and anyone can listen to the net on those frequencies.

Attention. Attention. This is [callsign and name] calling the Ramona Outback Amateur Radio Society emergency services net on [date] at [time]. We will be using this frequency for emergency communication and notification. This is [an actual emergency or drill].

This is a directed net. Please make no transmissions unless called upon by the net control station. Emergency traffic may break into this net at anytime and will be acknowledged by net control.

Standby for important information. [indicate the nature of the emergency and repeat any authoritative information as requested by government agencies].

We will now begin by taking check-ins by roll call.

We now accept other check-ins.

We will now accept volunteers to act as assistant net control.

We will now accept announcements, queries, or other business for the net.

Periodically, perhaps every 5 minutes or so, please repeat the information on the emergency and remind listeners that the net is in session.

3.2. Amateur Radio Net Control Script Continued

Attention. Attention. This is [callsign and name] calling the Ramona Outback Amateur Radio Society emergency services net on [date] at [time]. We will be using this frequency for emergency communication and notification. This is [an actual emergency or drill].

This is a directed net. Please make no transmissions unless called upon by the net control station. Emergency traffic may break into this net at any time, and will be acknowledged by net control.

Standby for important information. [indicate the nature of the emergency and repeat any authoritative information as requested by government agencies].

We will now accept announcements, queries, or other business for the net.

This net will conclude as requirements dictate.

3.3. FRS Net Control Script

The following script can be used by an amateur radio operator or CERT member to begin a Family Radio Services (FRS) net during an emergency or disaster situation. The Main Purpose of the Family Radio Service Net is to establish some form of Communications with the members of the community. Much Valuable information pertaining to an emergency could be gained and used in responding to the needs of the Community. Follow the local protocol and procedures for utilization of this information.

Attention. Attention. This is [name] calling the Community Emergency Response Team emergency services net on [date] at [time]. We will be using Family Radios Services Channel 1 for emergency communication and notification. This is [an actual emergency or drill].

This is a directed net. Please make no transmissions unless called upon by the net control station. Emergency traffic may break into this net at any time, and will be acknowledged by net control.

Standby for important information. [indicate the nature of the emergency and repeat any authoritative information as requested by government agencies].

We will now begin by taking check-ins by roll call of CERT members.

We now accept other check-ins.

We will now accept volunteers to act as assistant net control. This is important for the Family Radio Services because it is difficult to cover all areas of Ramona from a single transmitting location. If you would like to be an assistant net control station, please call now by stating your name and approximate location.

We will now accept announcements, queries, or other business for the net.

Periodically, perhaps every 5 minutes or so, please repeat the information on the emergency and remind listeners that the net is in session. This periodic information should be repeated by all assistant net control stations in turn.

3.3. FRS Net Control Script Continued

Attention. Attention. This is [name] calling the Community Emergency Response Team emergency services net on [date] at [time]. We will be using Family Radios Services Channel 1 for emergency communication and notification. This is [an actual emergency or drill].

This is a directed net. Please make no transmissions unless called upon by the net control station. Emergency traffic may break into this net at any time, and will be acknowledged by net control.

Standby for important information. [indicate the nature of the emergency and repeat any authoritative information as requested by government agencies].

We will now accept announcements, queries, or other business for the net.

This net will conclude as requirements dictate.

4. Red Cross Shelter Communications

The Red Cross often uses amateur radio communicators when staffing emergency shelters. Amateur radio operators who are at shelters are encouraged to check-in with the shelter staff and identify the communications capabilities at the shelter.

The Amateur Emergency Radio Services (ARES) is often used to staff emergency shelters. The Ramona area ARES emergency coordinator is accessible via the ROARS point of contact.

- end of public section -

**RAMONA COMMUNITY PROTECTION & EVACUATION PLAN
SECTION K-1 – RADIO COMMUNICATIONS**

WEB ADDRESSES FOR THE FOLLOWING SECTIONS:

- **SAN DIEGO COUNTY, THE MOUNTAIN EMPIRE SCANNER FREQUENCIES**
<http://www.craigwilliams.com/radio/scanner/heartland.htm>
- **CRAIG'S CITIZEN RADIO AND SCANNER PAGE**
<http://www.craigwilliams.com/radio/miss.htm>
- **EMERGENCY ALERT SYSTEM**
<http://emergencyalertsystem.org/>

San Diego County, The Mountain Empire Scanner Frequencies

Updated July 6 2012

Scanner frequencies for the Mountain Empire Area of San Diego East County. Provided for residents who are interested in monitoring fire frequencies using Trunk Tracker scanners on the San Diego County 800 Mhz frequencies and State and Federal agencies on VHF. Also see our [Emergency acronyms and definitions page](#).

San Diego County, RCS, 800 Mhz Trunking System, Transmitter Site

The tables below are the tower frequencies and talkgroups for the **Analog Heartland Fire Frequencies**. The same tower frequencies work on digital scanners using digital talk groups. See the instructions for your scanner on programming these frequencies. Basically you need to enter the site frequencies, use the sites in bold for the Mountain Empire area, and then enter the Talkgroup numbers. With most new APCO25 scanners you only need to enter the control channels.

[Click on this link](#) to open an Adobe PDF file of the County RCS transmitter sites.

Red* are Primary Control Channels, **Blue*** are alternate control channels

Site	Name	Freqs								
001	<u>South Zone</u>	866.03750	866.13750	866.41250	866.43750	866.63750	866.88750	866.91250	867.06250	867.13750
		867.38750	867.41250	867.61250	867.63750	867.91250a	868.07500a	868.13750a	868.41250c	868.43750
		868.60000								
002	<u>North Zone</u>	856.17500	856.20000	857.17500	857.20000	858.17500	858.20000	859.20000	860.17500	860.20000
		860.22500	861.00000	861.15000	861.20000a	861.50000	862.15000a	862.20000a	863.15000c	864.25000
		865.00000								
003	<u>East Zone</u>	858.15000	860.15000	866.06250	866.08750	866.57500	867.58750	867.95000a	868.37500a	868.55000a
		868.92500c								
004	<u>Northeast Zone</u>	866.66250	866.68750	866.83750	867.16250	867.33750	867.66250	867.83750a	868.16250a	868.18750c

		868.33 750a								
00 5	<u>Boucher Hill (NE)</u>	866.30 000	867.05 000	867.58 750	868.45 000c					
01 0	<u>Harmony Hill (N)</u>	866.27 500	866.80 000	867.30 000	867.75 000c					
01 1	<u>Hendrix Peak (E)</u>	857.17 500	858.17 500	861.20 000c	863.05 000	867.05 000				
01 2	<u>Jojoba Hill (N)</u>	867.06 250	867.16 250	868.66 250c						
01 8	<u>Rams Hill (NE)</u>	866.86 250	867.36 250	868.86 250c						
01 9	<u>Sierra Rojo (NE)</u>	866.60 000	867.18 750	867.68 750	868.33 750	868.83 750c				
02 1	<u>Superstition Mtn (I)</u>	856.42 500	859.00 000	861.25 000	862.25 000	863.25 000c				
02 4	<u>San Onofre (N)</u>	867.07 500	867.56 250	867.95 000	868.07 500	868.47 500c				
02 5	<u>Black Mtn (I)</u>	856.20 000	858.20 000c	859.25 000	864.10 000	865.10 000a				
02 6	<u>Felicity (I)</u>	856.10 000	857.10 000a	861.10 000	862.05 000c					
02 7	<u>Hubbard Hill (N)</u>	862.25 000	863.25 000	864.25 000	865.25 000c					
03 0	<u>El Centro (I)</u>	857.02 500	857.20 000	858.02 500	858.07 500	859.02 500	860.02 500	864.05 000a	865.05 000a	865.25 000c
03 1	<u>Salton City (I)</u>	856.22 500	857.22 500c	858.22 500a	866.13 750					
03 2	<u>Brawley (I)</u>	856.07 500	857.07 500	858.05 000	859.05 000	859.07 500	860.20 000c	861.05 000	863.10 000a	864.25 000a
03 4	<u>Banner Ranch (E)</u>	867.27 500	867.77 500c							

From <http://www.radioreference.com>
As of 4/5/2009

Talkgroups, Heartland Inland Fire, Monta Vista (Cal Fire) (San Diego, Mountain Empire)

April 2009 update. Most East County Fire units are now being dispatched on the MVU (CF)Talkgroups listed below. **As of July 1 2008**, Campo Fire, Boulevard Fire, Laguna Fire and Palomar Fire have also moved to MV Dispatch. Below is the latest information on the CF Zone Talk Groups

California Department of Forestry Talkgroups April 2009

DEC	HEX	Mode	Alpha Tag	Description
10384	289	A	10A-MVU DISP	Dispatch 10 A
28048	6d9	A	10B-MVU ADM	Administration 10B
10320	285	A	10C-MVU CMD	Command 10C
10416	28b	A	10D-MVU TAC	Tac 10 D
28112	6dd	A	10E-MVU TAC	Tac 10 E
10352	287	A	10F-MVU CMD	Command 10F
28080	6db	A	10G-MVU TAC	Tac 10G
28144	6df	A	10H-MVU TAC	Tac 10H
28208	6.00E+03	A	10I-MVU CMD	Command 10 I
28176	6.00E+01	A	10J-MVU TAC	Tac 10 J
2288	08f	A	10K-MVU TAC	Tac 10 K
2320	91	A	10L-MVU TRVL	Travel 10 L
7056	1b9	A	10L-MVU FAIR	FireAir 10 L
10448	28d	A	10O-MVU Tac	Tac 10 O

Note: Colum labeled **DEC** is the Trunk Tracker code for trunking scanners

State (CDF) and Federal (USFS) Fire, VHF Frequencies

Ch	Frequency	Name
1	151.1900	MONTA VISTA
2	151.3550	MV COMMAND 1
3	151.2650	MV COMMAND 2
4	151.3400	MV COMMAND 3
5	151.2200	CDF AIR TO GROUND
6	151.2500	CDF T5
7	151.3700	CDF T8
8	151.4600	CDFT12

9	151.4750	CDFT13
10	153.9950	BORDER COMMAND
11	156.0750	CALCORD
12	154.1750	XSD COMMAND
13	155.0850	XSD TAC 1
14	154.3550	SD COUNTY GREY
15	151.1375	VTAC 11
16	154.4525	VTAC 12
17	158.7375	VTAC 13
18	159.4725	VTAC 14
19	154.2350	GREEN
20	153.8150	BROWN
21	154.2800	WHITE 1
22	154.2650	VFIRE 22
23	154.2950	VFIRE 23
24	168.7500	CNF DISPATCH
25	168.1500	CNF ADMIN
26	166.5500	FS TAC 4
27	167.1125	FS TAC 5
28	168.2375	FS TAC 6
29	164.1250	CNF SERVICE
30	169.1125	FS AIR/GROUND
31	168.2000	NIFC TAC 2
32	169.8125	FISH & WILDLIFE
33	153.7550	CESRS CA TRAVEL

Reference. The Scannerstuff, Southern California Frequency directory book is an excellent reference for scanners in general and a complete list of frequencies used in Southern California. Their website is at www.californiascanner.com. The book is available in San Diego at the [Ham Radio Outlet](#). Manuals. If you are missing a manual for your scanner [try this site](#).

Note: In the Mountain Empire the CHP has switched to the RCS digital system with the SDSO. To monitor these frequencies you need a digital scanner! Follow this link to the [strong signals website](#) for an extensive list of analog and digital scanners.

Information courtesy of various Internet websites below.

www.scandiego.com
www.sandiegoscan.com
[The Radio Reference](#)
[Radio Scanner Guide](#)

[Return](#)

Craig's Citizen Radio and Scanner Page

Shortcuts to topics on this page

[FRS and GMRS Radio](#)

[Multi-Use Radio Service \(MURS\)](#)

[The VHF / UHF "Dot" Frequencies](#)

[Radio and Scanner Links](#)

FRS and GMRS Radio

FRS frequencies are interleaved with GMRS frequencies. GMRS radios are also authorized to transmit on FRS channels 1 to 7 with no more than 5 watts and using 5 Khz deviation. All FRS channels are simplex, with 3 Khz deviation, 500 milliwatts output, and fixed antennas only. GMRS has expanded capability in power and external antennas allowed. GMRS uses 467 Mhz frequencies as repeater input channels.

NOTE: There are a large number of very inexpensive radios available with both FRS and GMRS frequencies in them so, if you are using a licensed GMRS radio do not be surprised if you receive interference from someone who did not bother to get their GMRS license.

FRS
Family Radio Service

GMRS
General Mobile Radio Service

KEY
*

Channel = Frequency

Frequency - Description

<u>01</u> = 462.5625	<u>8</u>	462.5750
<u>02</u> = 462.5875	<u>12</u>	462.6000 Repeater output ##
<u>03</u> = 462.6125	<u>9</u>	462.6250
<u>04</u> = 462.6375	<u>13</u>	462.6500
<u>05</u> = 462.6625	<u>15</u>	462.7250
<u>06</u> = 462.6875	<u>10</u>	462.6750 Local repeater
<u>07</u> = 462.7125	<u>14</u>	462.7000 Local repeater
08 = 467.5625	s	462.5625 Simplex low power
09 = 467.5875	s	462.5875 Simplex low power
10 = 467.6125	s	462.6125 Simplex low power

12 = 467.6625	s	462.6625 Simplex low power
13 = 467.6875	s	462.6875 Simplex low power
14 = 467.7125	s	462.7125 Simplex low power
	<u>11</u>	462.5500 Repeater output ##

467.5500 Repeater input
 467.5750 Repeater input
 467.6000 Repeater input
 467.6250 Repeater input
 467.6500 Repeater input
 467.6750 Repeater input
 467.7000 Repeater input
 467.7250 Repeater input

KEY

8 = Channel # on Audiovox GMRS 1525

s = GMRS shared with FRS

= Very active repeaters in San Diego

More information on GMRS at mygmrs.com

[FCC GMRS Page](#). Information and Licensing

JUNE 2010

About 11 years ago I wrote on this page that GRMS would be like CB radio after Audiovox released a FRS radio with GRMS frequencies on it. People sent me nasty emails complaining I was encouraging people to break the rules when all I was doing was predicting the future based on my past experience in the CB radio business, well, **I TOLD YOU SO!**.....

The FCC is proposing a massive rewrite of its Part 95 rules. These are the regulations that govern such public available two-way radio as the General Mobile Radio Service, the Family Radio Service, and 11-meter CB, to mention only a few.

WT Docket No. 10-119 was released on June 7th and is a catch all of proposed rules changes that would affect the General Mobile Radio Service the most. This, by ending its current licensing requirements and replacing these with what the FCC calls License by Rule. That's an FCC term that kind of means *doing to GMRS what it essentially did on 11 meter CB a few decades ago.*

Further

As to the Family Radio Service, the FCC proposes to prohibit the authorization of radios that combine FRS with other safety-related services. In other words, an FRS radio would have to be a Family Radio Service only transceiver and it would become illegal to manufacture an FRS radio that could work with or in any service other than channels where FRS is allocated to operate.

This would mean an end to a whole slew of transceivers that have multiple service capability especially those that cover both FRS and GMRS or some with FRS, GMRS and Marine channel capability.

http://hraunfoss.fcc.gov/edocs_public/attachmatch/FCC-10-106A1.doc

Multi-Use Radio Service (MURS)

Update 2009. Looks like my guess years ago was in error. Doesn't seem to be much happening on MURS. I suppose everyone is relying on their Cell phone.

The hottest, most recent, controversial, addition to "Family / CB" Radio is MURS. Established at the end of 2000 MURS has taken channels from the 151 Mhz VHF business band and **given them to "Family Radio"**.

MURS Channels

151.820 Mhz
151.880 Mhz
151.940 Mhz
154.570 Mhz
154.600 Mhz

[Link to a good page listing Business Frequencies](#)

[FCC MURS Page](#)

The "Dot" Frequencies

The frequencies below are commonly called "dot" frequencies as 5 watt or less portables are sold with these frequencies named for the color of the dot on the radio. I can get no clear reading of what the rules are on these frequencies. Some of them are really MURS frequencies and some are labeled "incinerate". If you really want to know I suggest a Google search.

These frequencies are found in radios sold to contractors, security companies, schools and anyone else looking for inexpensive portable radios. I haven't a clue on the license requirements as most people just buy them and start using them. Google "jobcom radio" and you will find lots of vendors.

151.625 Red Dot
154.570 Blue Dot
154.600 Green Dot
151.955 Purple Dot
464.550 Yellow Dot
464.500 Brown Dot
467.7625 J Dot
467.8125 KDot
467.8500 Silver Star
467.8750 Gold Star
467.9000 Red Star
467.9250 Blue Star

Radio and Scanner Links

[Craig's East County Scanner Lists](#)

[radioreference.com Trunked Radio Information Website](#)

[freqofnature.com Western States Scanner / Trunking Frequencies](#)

[Scan Diego, Detailed San Diego Lists](#)

[Scanner Master \(retailer\)](#)

[Radio Scanner Guide](#)

[Freq of Nature. News and many frequencies](#)

[Monitor Times](#)

[Strong Signals](#)

Vendors

[HAM Radio Outlet](#)

[CheapHam.com](#)

Amateur, Scanner, Marine

[Emergency acronyms and definitions](#)

[Return to Craig's W6CAW Page](#)

Updated August 2009

<http://www.mygmrs.com/>



Emergency Alert System

San Diego County Operational Area

[HOME](#)
[EAS-CAP Requirements](#)
[RMT Schedule \(2014\)](#)
[EAS LOG INFO](#)
[eas sample log \(PDF\)](#)
[sample log explanation](#)
[log sheet \(PDF version\)](#)
[log sheet \(Excel version\)](#)
[CARE & Amber Alerts](#)
[CARE Alerts \(Regional\)](#)
[Amber Alerts \(State wide\)](#)
[EARTHQUAKE INFO](#)
[earthquake country \(PDF\)](#)
[recent earthquakes](#)
[earthquake preparedness](#)
[TSUNAMI INFO](#)
[tsunami inundation maps](#)
[tsunami preparedness](#)
[west coast warning center](#)
[pacific tsunami center](#)
[tsunami threat report](#)
[tsunami ready initiative](#)
[tsunami ready communities](#)
[EAS Rules & Regulations](#)
[EAS Q & A](#)
[Self-Inspection Checklist](#)
[California EAS](#)
[FCC Website \(EAS\)](#)
[Subscribe to EAS List](#)
[Send Message to Chairman](#)

San Diego, California

Emergency Alert System

TV Stations, Radio Stations and Cable Systems
in San Diego county

Now Available!

**San Diego county tsunami
inundation maps**

Thank you for participating in San Diego's **Emergency Alert System**.

This website serves as a resource for radio and television broadcasters, cable facilities, and government agencies in San Diego county, participating in the federally mandated **Emergency Alert System**. San Diego's operational area is limited to a portion of San Diego county. A map detailing the perimeter of our operational area is in your local EAS plan. The current plan has the notation "Minor Revision June 21, 2012" on the cover page.

Individuals with EAS oversight at their facility should subscribe to the **SD_EAS list**.

Notices of Required Monthly Tests (RMT), activations, and other emergency communications and coordination notices are distributed via the SD_EAS list. Notices of scheduled EAS general meetings are also distributed

via the SD_EAS list.

CARE Alerts (**C**hild **A**bduction **R**egional **E**mergency) and state wide Amber Alerts have been added to the list of potential EAS activations. For additional information about CARE Alerts, please visit the CARE Amber Alerts link.



Page sponsored by: [San Diego Artists & California Pictures](#)

RAMONA COMMUNITY PROTECTION & EVACUATION PLAN
SECTION N – ROAD ACCESS STANDARDS

Road Access Standards

- If the roadway serves more than 2 single-family dwellings, the roadway shall be a minimum of 24 feet in width improved over 28 feet graded.
- Where the roadway access serves no more than 2 single-family dwellings, which cannot be further subdivided, the minimum roadway width shall be 16 feet with a minimum graded width of 20 feet.
- If the existing road easement is 20 feet or less in width, than the roadway width may be reduced to 20 feet minimum improved over 24 feet graded.

Parking

- Where the roadway is 24 to 28 feet in width, 'No Parking' signs shall be posted. In these areas, if there is a curb, it shall be painted red.

Vegetation Along Roadways

- Roadways and or driveways shall be cleared of combustible vegetation the width of the roadway plus 10 feet on either side of the roadway.
- Vegetation above the roadway (vertical clearance) must be cleared a minimum of 13.5 feet.

RAMONA COMMUNITY PROTECTION & EVACUATION PLAN
SECTION P – LOGISTICS

Community Resource List

Businesses and agencies listed below may be available to provide specific support functions during and following a disaster. School phone numbers and addresses are included only for easy reference. For sheltering information, please refer to Section J – Sheltering.

American Red Cross. 3950 Calle Fortunada, San Diego, CA 92123 **(858)309-1200**

American Red Cross evacuation selected sites will be:

Stocked with supplies to open center for 100 people.

Staffed with ARC personnel.

Operated at the request of County OES, via Sheriff's office or Fire Dept.

Provides Health Services personnel to Red Cross Mass Care/Shelter Centers.

ARC Functions to:

Provide casework services to displaced individuals due to disaster.

Disaster Action Teams (DAT) will open facilities for evacuations and staff until Mass Care/Shelter staffing is completed by ARC HQ.

Current facilities agreements are with Ramona Unified School District.

Upon request, blood and blood products are made available for disaster victims through the nearest Red Cross regional blood center, if blood is in supply.

Community Education is available at ARC HQ, and made available to rural communities upon request.

Amateur Radio Emergency Service (A.R.E.S.)

Don Scott, Emergency Coordinator: **(760)788-6932**; (760)315-2879 (cell)

County of San Diego

Dept. of Animal Services: (619)236-2341

Animal Rescue and Humane Society Hotline: (619)299-0871

County of San Diego

Department of Public Works

Ramona Road Station

116 5th St.

Ramona, CA 92065

(760)787-3312

County of San Diego

Department of Parks and Recreation

5500 Overland Avenue, Suite 410

San Diego, CA 92123

Public Information: (858)966-1300

Dos Picos Park

17953 Dos Picos Park Rd.

Ramona, CA 92065

Park Number (760) 789-2220

RAMONA COMMUNITY PROTECTION & EVACUATION PLAN
SECTION P – LOGISTICS

County of San Diego
Department of Parks and Recreation
5500 Overland Avenue, Suite 410
San Diego, CA 92123
Public Information: (858)966-1300

Collier Park

626 E St.
Ramona, CA 92065

Boys and Girls Club Location

County of San Diego
Department of Parks and Recreation
Operations Division, Dist. 3 (Ramona, Mountains, Borrego)

5500 Overland Avenue, Suite 410
San Diego, CA 92123

Public Information: (858)966-1300

Barnett Ranch (Thos. Bros. 1172-H5 – 1500 Deviney Ln./San Vicente Rd.)
Holly Oaks (Thos. Bros. 1172-E4 – Dye Rd./Southern Oak Rd.)
Luelf Pond Preserve (Thos. Bros. 1172-E4 – 3000 Duck Pond Ln.)
Mt. Gower Open Space Preserve (Thos. Bros. 1172-D6 – 17090 Gunn Stage Rd.)
Ramona Grasslands Preserve (Thos. Bros. 1151-H7 – Highland Valley
Rd./Rangeland Rd.)
Simon Preserve (Thos. Bros. 1173-D2 – 23500 Bassett Ct.)

County of San Diego

Ramona Airport

George Watson, Airport Manager: (760)788-3366 (Ramona Airport Desk)
2926 Montecito Rd.
Ramona, CA 92065

Ramona Community Center

434 Aqua Lane
Operated by Ramona Municipal Water District
David Barnum, General Manager
105 Earlham
Ramona, CA 92065
(760)789-1330

Ramona Outback Amateur Radio (R.O.A.R.S.)

Don Scott, R.O.A.R.S. Net Manager: **(760)788-6932**; (760)315-2879 (cell)

RAMONA COMMUNITY PROTECTION & EVACUATION PLAN
SECTION P – LOGISTICS

Younglife Oakbridge

P. O. Box 1739
Ramona, CA 92065
(760)789-6980

Schools

Ramona Unified School District Office, 720 9th St., Ramona, CA 92065 (760)787-2000
Barnett Elementary School, 23925 Couna Way, Ramona, CA 92065 (760)787-3500
Hanson Elementary School, 2520 Boundary Ave., Ramona, CA 92065 (760)787-2100
James Dukes Elementary School, 24908 Abalar Way, Ramona, CA 92065
(760)788-5060
Montecito High School, 720 9th St., Ramona, CA 92065 (760)787-4300
Mt. Woodson Elementary School, 17427 Archie Moore Trail, Ramona, CA 92065
(760)788-5120
Mt. Valley Academy, 1010 Ramona St., Ramona, CA 92065 (760)787-3600
Olive Peirce Middle School, 1521 Hanson Ln., Ramona, CA 92065 (760)787-2400
Ramona Community School, 1010 Ramona St., Ramona, CA 92065 (760)787-3600
Ramona Elementary School, 415 8th St., Ramona, CA 92065 (760)787-4400
Ramona High School, 1401 Hanson Ln., Ramona, CA 92065 (760)787-4000

Equipment Rental, Fuel and Water

BJ's Rentals

2055 Main St.
Ramona, CA 92065
(760)789-0931

Resources:

- Generators (3000 Watt to 4500 Watt)
- Safety Kits
- Safety Goggles
- Hard Hats
- Dust Masks
- Compressors
- Light Towers
- Fuel

One-Stop Equipment Rental & Landscape Supply

Ramona Equipment Rental
254 Pine St.
Ramona, CA 92065
(760)789-8010

Resources:

- Generators (3.5 KW to 150 KVA)

RAMONA COMMUNITY PROTECTION & EVACUATION PLAN
SECTION P – LOGISTICS

Hard Hats
Safety Glasses/Goggles
Compressors
Light Towers
Fuel

PIVA Equipment Services

124 10th St.

Ramona, CA 92065

(760)788-4445

Resources:

Generators (1000 Watt to 10 KW)

Light Towers with Generator 6.0 KW

5 HP Gas Compressors

2 HP Electric Compressors

Kamps Propane/Ramona Energy

Jeff Jones, Manager

Bill Groves, Jr., Marketing Manager

1000 Olive Street

P. O. Box 1980

Ramona, CA 92065-0088

(760)789-0410

(760)789-7079, 24-Hour Emergency Service

Famous Ramona Water, Inc

250 Aqua Lane

P.O. Box 1195

Ramona, Ca. 92065-0860

(760)789-0174 Phone

(760)789-1066 Fax

Area Arenas

Casey Tibbs Western Center

Location: San Diego Country Estates

Address: 15910 Avenal Lane (Pappas Road at Avenal Lane)

Contact: Teri Zaffarano

(760)789-3407

Copper Meadows Equestrian Center

Location: Near Ramona Airport

Address: 633 Montecito Road

(760)788-7702

Web site: www.copper-meadows.com

RAMONA COMMUNITY PROTECTION & EVACUATION PLAN
SECTION P – LOGISTICS

Creek Hollow Ranch

Location: Old Julian Highway Area
Address: 26131 Old Julian Highway
(760)788-3793
Email: www.creekhollowranch.com/

Fred Grand Arena

Location: In Town at East End
Address: Aqua Lane
(760)788-0811

Hidden Horse Ranch

Address: 23970 E. Old Julian Highway
Ramona, CA 92065
(760)789-9514
www.HiddenHorseRanch.com

Holly Oaks Arena

Location: Dye Road at Holly Oaks Drive
Contact: George Eastwood

International Equestrian Center

Location: San Diego Country Estates
Address: 16911 Gunn Stage Road
Contact: Teri Zaffarano
(760)789-3407

Mountain Valley Ranch

Location: East End, corner of Magnolia
Address: 842 Highway 78
Contact: Clay and Joyce Hatch
(760)788-8703

Hospitals

Alvarado Hospital, 6655 Alvarado Rd., San Diego, CA (691)287-3270

Kaiser Permanente, 4637 Zion Ave., San Diego, CA 92120 (619)528-5000

Palomar Medical Center (Trauma Center), 2185 W. Citracado Parkway, Escondido, CA (442)281-5000

Pomerado Hospital, 15615 Pomerado Rd., Poway, CA 92064 (858)613-4000

RAMONA COMMUNITY PROTECTION & EVACUATION PLAN
SECTION P – LOGISTICS

Scripps Mercy (Trauma Center), 4077 5th Ave., San Diego, CA 92103 (619)294-8111

**Sharp Grossmont Hospital, 5555 Grossmont Center Dr., La Mesa, CA 91942
(619)740-6000**

**UCSD Medical Center (Trauma and Burn Center), 200 W. Arbor Dr., San Diego, CA
92103 (619)543-6222**

VEGETATION MANAGEMENT WEBSITES

1

RAMONA COMMUNITY PROTECTION & EVACUATION PLAN
SECTION Q – VEGETATION MANAGEMENT WEBSITES

<p>Emergency, San Diego Office of Emer. Svc. Emergency, San Diego County Sheriff Dept. Emergency. SDG&E FEMA State OES Erosion Control</p> <p>How to guides for Emergency, hazards, est. losses, creating mitigation plans.</p>		<p>www.sdarc.org www.sdcounty.ca.gov www.sdsheriff.net www.sdge.com www.fema.gov www.oes.ca.gov www.ca.nrcs.usda.gov www.wildfirezone.org www.fema.gov</p>
<p>F. Fire Associations (see A) Fire Plan, Basic Fire Plan, Calif. Fuel Modification</p> <p>Funding sources: Fire Alliance, California Fire Safe Council, State of Calif. Esri GIS/Mapping Environmental</p>	<p>Useful data, mapping etc.</p>	<p>www.leginfo.ca.gov http://www.fire.ca.gov/index.php www.wildfirezone.org www.cafirealliance.org www.firesafecouncil.org www.esri.com www.sdfoundation.org</p>
<p>Dept of Agriculture Programs The below are funding programs after a disaster and are administered by the Natural Resources Conservation Service (NRCS) at (760) 745-2061</p> <ul style="list-style-type: none"> <input type="checkbox"/> Emergency Watershed Protection Program (EWP) – program to protect the watershed from mud slides, debris, erosion. <input type="checkbox"/> Emergency Conservation Program (ECP) – program provides funding for farmers/ranchers to rehabilitate land damaged by wind, erosion, flooding, etc. <input type="checkbox"/> Environmental Quality Incentives Program. (EQIP) –program is for farms, ranches, nurseries etc. for land owners to do best management practices (BMP) for soil conservation. 		
<p>G. GIS</p>	<p>Mapping, disaster and emergency management</p>	<p>www.esri.com</p>
<p>H. Hazard Mitigation Plan</p>		<p>www.opr.ca.gov</p>
<p>I. Insurance Invasive Plants</p>	<p>For rating of your area For information see:</p>	<p>www.insurance.ca.gov www.cdfa.ca.gov www.invasivespeciesinfo.gov</p>
<p>J-K</p>		

RAMONA COMMUNITY PROTECTION & EVACUATION PLAN
SECTION Q – VEGETATION MANAGEMENT WEBSITES

L. <u>Landscaping</u> UCCE Master Gardeners	Drought-Tolerant plants	http://camastergardeners.ucdavis.edu/ /California_Counties_MG_Websites/
M. <u>Mapping</u>	See GIS	www.esri.com
N. National Fire Plan		www.forestsandrangelands.gov
O.		
P. <u>Planning</u> County of San Diego Planning & Land Use San Diego County Regional Comp. Plan (DRAFT) Note: also conducts free workshops on grant writing, has extensive census, mapping, planning and other data for the 18 cities and county. Planning, Fire Hazard Permits, Burning Prescribed Burning Plan, Vegetation Management: UC Cooperative Extension – Wildfirezone.org	By SANDAG Information for land use practitioners. See local fire agency & phone book.	www.sdcountry.ca.gov/lueg www.sandag.org (619) 699-1900 www.opr.ca.gov www.arb.ca.gov/smp/smp.htm www.arb.ca.gov www.wildfirezone.org
S. San Diego County San Diego Gas & Electric	For removal of dead or dying trees near/on their property	http://sdpublic.sdcountry.ca.gov/ www.sdge.com
T. <u>Threatened and endangered Habitat</u>		www.dfg.ca.gov
V. <u>Vegetation Management Program</u>	A cost share program by CAL FIRE	http://www.fire.ca.gov/index.php

RAMONA COMMUNITY PROTECTION & EVACUATION PLAN
SECTION Q – VEGETATION MANAGEMENT WEBSITES

W. <u>Weed control</u> Ramona Fire Department UC Cooperative Extension	See your local RCD or NRCS.	http://www.fire.ca.gov/index.php www.rmwd.org/fire-department www.ucanr.edu/sites/socalinvasives
---	--	---